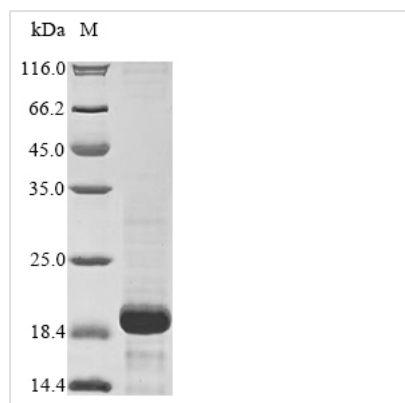




Recombinant Human Antileukoproteinase (SLPI)

Product Code	CSB-EP021781HU
Abbreviation	Recombinant Human SLPI protein
Storage	The shelf life is related to many factors, storage state, buffer ingredients, storage temperature and the stability of the protein itself. Generally, the shelf life of liquid form is 6 months at -20°C/-80°C. The shelf life of lyophilized form is 12 months at -20°C/-80°C.
Uniprot No.	P03973
Storage Buffer	Tris-based buffer,50% glycerol
Product Type	Recombinant Proteins
Immunogen Species	Homo sapiens (Human)
Purity	Greater than 85% as determined by SDS-PAGE.
Sequence	SGKSFKAGVCPPKKSAQCLRYKKPEQCSDWQCPGKKRCCPDTCGIKCLDPV DTPNPTRRKPGKCPVTYGGCLMLNPPNFCEMDGQCKRDLKCCMGMCGKSC VSPVKA
Research Area	Cardiovascular
Source	E.coli
Target Names	SLPI
Protein Names	Recommended name: Antileukoproteinase Short name= ALP Alternative name(s): BLPI HUSI-1 Mucus proteinase inhibitor Short name= MPI Protease inhibitor WAP4 Secretory leukocyte protease inhibitor Seminal proteinase i
Expression Region	26-132aa
Notes	Repeated freezing and thawing is not recommended. Store working aliquots at 4°C for up to one week.
Tag Info	N-terminal 10xHis-tagged and C-terminal Myc-tagged
Mol. Weight	16.7 kDa
Protein Length	Full Length of Mature Protein

Image



(Tris-Glycine gel) Discontinuous SDS-PAGE (reduced) with 5% enrichment gel and 15% separation gel.



Shelf Life

The shelf life is related to many factors, storage state, buffer ingredients, storage temperature and the stability of the protein itself.

Generally, the shelf life of liquid form is 6 months at -20°C/-80°C. The shelf life of lyophilized form is 12 months at -20°C/-80°C.