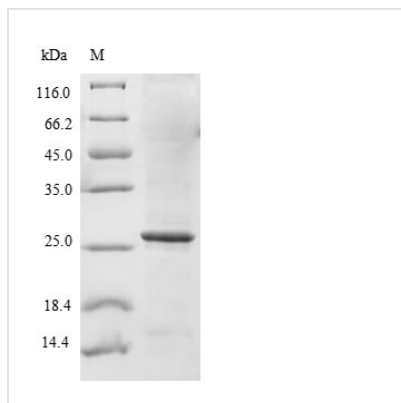




Recombinant Human Sodium-dependent phosphate transport protein 2B (SLC34A2), partial

Product Code	CSB-EP021581HU
Relevance	May be involved in actively transporting phosphate into cells via Na ⁺ cotransport. It may be the main phosphate transport protein in the intestinal brush border membrane. May have a role in the synthesis of surfactant in lungs' alveoli.
Abbreviation	Recombinant Human SLC34A2 protein, partial
Storage	The shelf life is related to many factors, storage state, buffer ingredients, storage temperature and the stability of the protein itself. Generally, the shelf life of liquid form is 6 months at -20°C/-80°C. The shelf life of lyophilized form is 12 months at -20°C/-80°C.
Uniprot No.	O95436
Product Type	Recombinant Protein
Immunogen Species	Homo sapiens (Human)
Purity	Greater than 85% as determined by SDS-PAGE.
Sequence	LLQSRCPRVLPKKLQNWNLPLWMRSLKPWDVVSKFTGCFQMRCCCCCRV CCRACCLLCDCPKCCRCCKCEDLEEAEQEGQDVPVKAPETFDNITISREAQG EVPASDSKTECTA
Research Area	others
Source	E.coli
Target Names	SLC34A2
Protein Names	Na(+)-dependent phosphate cotransporter 2B NaPi3b Sodium/phosphate cotransporter 2B
Expression Region	574-689aa
Notes	Repeated freezing and thawing is not recommended. Store working aliquots at 4°C for up to one week.
Tag Info	N-terminal 6xHis-B2M-tagged
Mol. Weight	27.1 kDa
Protein Length	Partial
Image	



(Tris-Glycine gel) Discontinuous SDS-PAGE (reduced) with 5% enrichment gel and 15% separation gel.

Description

The production of the recombinant Human SLC34A2 protein begins with the creation of the recombinant plasmid, which is synthesized by inserting the gene encoding the Human SLC34A2 protein (574-689aa) into a plasmid vector. The recombinant plasmid is introduced into e.coli cells. e.coli cells that can survive in the presence of a specific antibiotic are selected and then cultured under conditions conducive to the expression of the gene of interest. The protein is equipped with a N-terminal 6xHis-B2M tag. Following expression, the recombinant SLC34A2 protein is isolated and purified from the cell lysate using affinity purification. Denaturing SDS-PAGE is then employed to resolve the resulting recombinant Human SLC34A2 protein, demonstrating a purity exceeding 85%.

Reconstitution

We recommend that this vial be briefly centrifuged prior to opening to bring the contents to the bottom. Please reconstitute protein in deionized sterile water to a concentration of 0.1-1.0 mg/mL. We recommend to add 5-50% of glycerol (final concentration) and aliquot for long-term storage at -20°C/-80°C. Our default final concentration of glycerol is 50%. Customers could use it as reference.

Shelf Life

The shelf life is related to many factors, storage state, buffer ingredients, storage temperature and the stability of the protein itself. Generally, the shelf life of liquid form is 6 months at -20°C/-80°C. The shelf life of lyophilized form is 12 months at -20°C/-80°C.