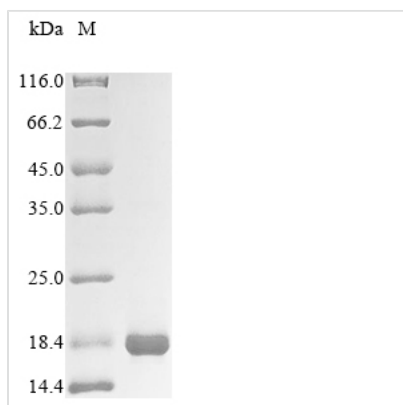




# Recombinant Human Solute carrier family 2, facilitated glucose transporter member 1 (SLC2A1), partial

<b>Product Code</b>	CSB-EP021546HU
<b>Abbreviation</b>	Recombinant Human SLC2A1 protein, partial
<b>Storage</b>	The shelf life is related to many factors, storage state, buffer ingredients, storage temperature and the stability of the protein itself. Generally, the shelf life of liquid form is 6 months at -20°C/-80°C. The shelf life of lyophilized form is 12 months at -20°C/-80°C.
<b>Uniprot No.</b>	P11166
<b>Storage Buffer</b>	Tris-based buffer,50% glycerol
<b>Product Type</b>	Recombinant Proteins
<b>Immunogen Species</b>	Homo sapiens (Human)
<b>Purity</b>	Greater than 85% as determined by SDS-PAGE.
<b>Sequence</b>	CPESPRFLLINRNEENRAKSVLKKLRGTADVTHDLQEMKEESRQMMREKKVTI LELFRSPAYRQP
<b>Research Area</b>	Metabolism
<b>Source</b>	E.coli
<b>Target Names</b>	SLC2A1
<b>Protein Names</b>	Recommended name: Solute carrier family 2, facilitated glucose transporter member 1 Alternative name(s): Glucose transporter type 1, erythrocyte/brain Short name= GLUT-1 HepG2 glucose transporter
<b>Expression Region</b>	207-271aa
<b>Notes</b>	Repeated freezing and thawing is not recommended. Store working aliquots at 4°C for up to one week.
<b>Tag Info</b>	N-terminal 10xHis-tagged and C-terminal Myc-tagged
<b>Mol. Weight</b>	15.2 kDa
<b>Protein Length</b>	partial
<b>Image</b>	



(Tris-Glycine gel) Discontinuous SDS-PAGE (reduced) with 5% enrichment gel and 15% separation gel.

## Shelf Life

The shelf life is related to many factors, storage state, buffer ingredients, storage temperature and the stability of the protein itself. Generally, the shelf life of liquid form is 6 months at -20°C/-80°C. The shelf life of lyophilized form is 12 months at -20°C/-80°C.