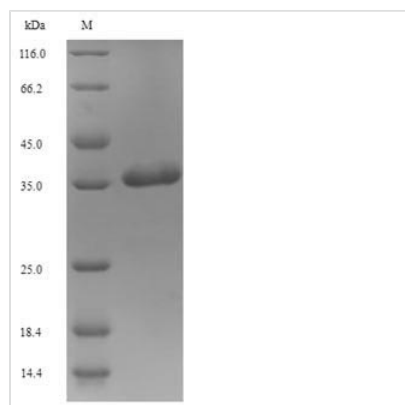




# Recombinant Human excitatory amino acid transporter 3 (SLC1A1), partial

<b>Product Code</b>	CSB-EP021432HU
<b>Relevance</b>	Transports L-glutamate, L- and D-aspartate and L-cystein (PubMed:21123949). Essential for terminating the postsynaptic action of glutamate by rapidly removing released glutamate from the synaptic cleft. Acts as a symport by cotransporting sodium. Negatively regulated by ARL6IP5
<b>Abbreviation</b>	Recombinant Human SLC1A1 protein, partial
<b>Storage</b>	The shelf life is related to many factors, storage state, buffer ingredients, storage temperature and the stability of the protein itself. Generally, the shelf life of liquid form is 6 months at -20°C/-80°C. The shelf life of lyophilized form is 12 months at -20°C/-80°C.
<b>Uniprot No.</b>	P43005
<b>Alias</b>	Excitatory amino-acid carrier 1 Neuronal and epithelial glutamate transporter Sodium-dependent glutamate/aspartate transporter 3 Solute carrier family 1 member 1
<b>Product Type</b>	Recombinant Protein
<b>Immunogen Species</b>	Homo sapiens (Human)
<b>Purity</b>	Greater than 90% as determined by SDS-PAGE.
<b>Sequence</b>	AEDVTLLIAVDWLLDRFRTMVNVLGDAFGTGIVEKLSKKELEQMDVSSEVNIVN PFALESTILDNEDSDTKKSYVNGGFAVDKSDTISFTQTSQF
<b>Research Area</b>	Neuroscience
<b>Source</b>	E.coli
<b>Target Names</b>	SLC1A1
<b>Expression Region</b>	430-524aa
<b>Notes</b>	Repeated freezing and thawing is not recommended. Store working aliquots at 4°C for up to one week.
<b>Tag Info</b>	N-terminal GST-tagged
<b>Mol. Weight</b>	37.5kDa
<b>Protein Length</b>	Partial
<b>Image</b>	



(Tris-Glycine gel) Discontinuous SDS-PAGE (reduced) with 5% enrichment gel and 15% separation gel.

### Reconstitution

We recommend that this vial be briefly centrifuged prior to opening to bring the contents to the bottom. Please reconstitute protein in deionized sterile water to a concentration of 0.1-1.0 mg/mL. We recommend to add 5-50% of glycerol (final concentration) and aliquot for long-term storage at -20°C/-80°C. Our default final concentration of glycerol is 50%. Customers could use it as reference.

### Shelf Life

The shelf life is related to many factors, storage state, buffer ingredients, storage temperature and the stability of the protein itself. Generally, the shelf life of liquid form is 6 months at -20°C/-80°C. The shelf life of lyophilized form is 12 months at -20°C/-80°C.