

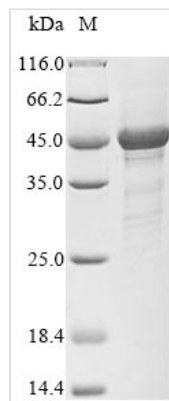


Recombinant Human S-phase kinase-associated protein 1 (SKP1)

Product Code	CSB-EP021360HU
Relevance	<p>Essential component of the SCF (SKP1-CUL1-F-box protein) ubiquitin ligase complex, which mediates the ubiquitination of proteins involved in cell cycle progression, signal transduction and transcription. In the SCF complex, serves as an adapter that links the F-box protein to CUL1. The functional specificity of the SCF complex depends on the F-box protein as substrate recognition component. SCF(BTRC) and SCF(FBXW11) direct ubiquitination of CTNNB1 and participate in Wnt signaling. SCF(FBXW11) directs ubiquitination of phosphorylated NFKBIA. SCF(BTRC) directs ubiquitination of NFKBIB, NFKBIE, ATF4, SMAD3, SMAD4, CDC25A, FBXO5 and probably NFKB2. SCF(SKP2) directs ubiquitination of phosphorylated CDKN1B/p27kip and is involved in regulation of G1/S transition. SCF(SKP2) directs ubiquitination of ORC1, CDT1, RBL2, ELF4, CDKN1A, RAG2, FOXO1A, and probably MYC and TAL1. SCF(FBXW7) directs ubiquitination of cyclin E, NOTCH1 released notch intracellular domain (NICD), and probably PSEN1. SCF(FBXW2) directs ubiquitination of GCM1. SCF(FBXO32) directs ubiquitination of MYOD1. SCF(FBXO7) directs ubiquitination of BIRC2 and DLGAP5. SCF(FBXO33) directs ubiquitination of YBX1. SCF(FBXO11) directs ubiquitination of BCL6 and DTL but does not se to direct ubiquitination of TP53. SCF(BTRC) mediates the ubiquitination of NFKBIA at 'Lys-21' and 'Lys-22'; the degradation frees the associated NFKB1-RELA dimer to translocate into the nucleus and to activate transcription. SCF(CCNF) directs ubiquitination of CCP110. SCF(FBXL3) and SCF(FBXL21) direct ubiquitination of CRY1 and CRY2. SCF(FBXO9) direct ubiquitination of TTI1 and TELO2. SCF(FBXO10) direct ubiquitination of BCL2.</p>
Abbreviation	Recombinant Human SKP1 protein
Storage	The shelf life is related to many factors, storage state, buffer ingredients, storage temperature and the stability of the protein itself. Generally, the shelf life of liquid form is 6 months at -20°C/-80°C. The shelf life of lyophilized form is 12 months at -20°C/-80°C.
Uniprot No.	P63208
Alias	Cyclin-A/CDK2-associated protein p19 ;p19AOrgan of Corti protein 2 ;OCP-2Organ of Corti protein II ;OCP-IIRNA polymerase II elongation factor-like protein;SIITranscription elongation factor B polypeptide 1-likep19skp1
Product Type	Recombinant Protein
Immunogen Species	Homo sapiens (Human)
Purity	Greater than 90% as determined by SDS-PAGE.
Sequence	PSIKLQSSDGEIFEVDVEIAKQSVTIKTMLEDLGMDDEGDDDPVPLPNVNAAILK KVIQWCTHHKDDPPPPEDDENKEKRTDDIPVWDQEFLKVDQGTLFELILAANY LDIKGLLDVTCKTVANMIKGKTPPEIRKTFNIKNDFTEEEEAQVRKENQWCEEK



Research Area	Cell Biology
Source	E.coli
Target Names	SKP1
Expression Region	2-163aa
Notes	Repeated freezing and thawing is not recommended. Store working aliquots at 4°C for up to one week.
Tag Info	C-terminal GST-tagged
Mol. Weight	45.5kDa
Protein Length	Full Length of Mature Protein

Image


(Tris-Glycine gel) Discontinuous SDS-PAGE (reduced) with 5% enrichment gel and 15% separation gel.

Description

This Recombinant Human SKP1 protein is a valuable tool for researchers in the field of cell biology. S-phase kinase-associated protein 1 (SKP1) is a core component of the SCF (SKP1-CUL1-F-box protein) E3 ubiquitin ligase complex, playing a crucial role in cell cycle progression, signal transduction, and ubiquitin-mediated proteolysis.

Our Recombinant Human SKP1 protein is expressed in E.coli, yielding the full length of mature protein (2-163aa) while maintaining its native structure and function. Featuring a C-terminal GST-tag, this protein enables efficient purification and detection, providing consistent and reliable results for your research. The purity of our Recombinant Human SKP1 protein is greater than 90%, as determined by SDS-PAGE, ensuring a high-quality product for your experiments. Available in both liquid and lyophilized powder formats, this protein is designed to meet the diverse requirements of your research.

Reconstitution

We recommend that this vial be briefly centrifuged prior to opening to bring the contents to the bottom. Please reconstitute protein in deionized sterile water to a concentration of 0.1-1.0 mg/mL. We recommend to add 5-50% of glycerol (final concentration) and aliquot for long-term storage at -20°C/-80°C. Our default final concentration of glycerol is 50%. Customers could use it as reference.

Shelf Life

The shelf life is related to many factors, storage state, buffer ingredients, storage temperature and the stability of the protein itself. Generally, the shelf life of liquid form is 6 months at -20°C/-80°C. The shelf life



of lyophilized form is 12 months at -20°C/-80°C.