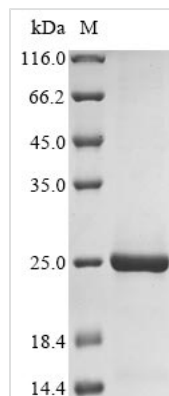




Recombinant Pig Sialoadhesin (SIGLEC1), partial

| | |
|--------------------------|---|
| Product Code | CSB-EP021293PI |
| Abbreviation | Recombinant Pig SIGLEC1 protein, partial |
| Storage | The shelf life is related to many factors, storage state, buffer ingredients, storage temperature and the stability of the protein itself. Generally, the shelf life of liquid form is 6 months at -20°C/-80°C. The shelf life of lyophilized form is 12 months at -20°C/-80°C. |
| Uniprot No. | A7LCJ3 |
| Form | Liquid or Lyophilized powder |
| Storage Buffer | If the delivery form is liquid, the default storage buffer is Tris/PBS-based buffer, 5%-50% glycerol. If the delivery form is lyophilized powder, the buffer before lyophilization is Tris/PBS-based buffer, 6% Trehalose. |
| Product Type | Recombinant Protein |
| Immunogen Species | Sus scrofa (Pig) |
| Purity | Greater than 90% as determined by SDS-PAGE. |
| Sequence | SWTVSRPETVQGIGKGSCLIPCTFGFPANVEVPHGITAIWYYDYSGKRLVVS HSRNPKVVENHFQGRALLLGQAEQRTCSLLKDLQPQDSGSYNFRFEISEGNRW SDVKGTVVTVEVPSVPTIALPAKLHEG |
| Research Area | Immunology |
| Source | E.coli |
| Target Names | SIGLEC1 |
| Expression Region | 20-153aa |
| Notes | Repeated freezing and thawing is not recommended. Store working aliquots at 4°C for up to one week. |
| Tag Info | N-terminal 10xHis-tagged and C-terminal Myc-tagged |
| Mol. Weight | 22.3 kDa |
| Protein Length | Partial |

Image



(Tris-Glycine gel) Discontinuous SDS-PAGE (reduced) with 5% enrichment gel and 15% separation gel.



Description

The Recombinant *Sus scrofa* (Pig) SIGLEC1 is a bioengineered replica of the native Sialoadhesin. A product of precision research, this protein is meticulously produced for Immunology researchers.

Expressed in *E.coli*, this partial protein focuses on the 20-153aa region, effectively capturing the most critical aspects of Sialoadhesin's biological role. To facilitate easy purification and detection, the protein carries an N-terminal 10xHis-tag and a C-terminal Myc-tag.

Our Recombinant *Sus scrofa* (Pig) SIGLEC1 is held to high standards, boasting a purity greater than 90% as determined by SDS-PAGE. This assures that you can trust the quality and consistency of our product in your research.

Reconstitution

We recommend that this vial be briefly centrifuged prior to opening to bring the contents to the bottom. Please reconstitute protein in deionized sterile water to a concentration of 0.1-1.0 mg/mL. We recommend to add 5-50% of glycerol (final concentration) and aliquot for long-term storage at -20°C/-80°C. Our default final concentration of glycerol is 50%. Customers could use it as reference.

Shelf Life

The shelf life is related to many factors, storage state, buffer ingredients, storage temperature and the stability of the protein itself. Generally, the shelf life of liquid form is 6 months at -20°C/-80°C. The shelf life of lyophilized form is 12 months at -20°C/-80°C.