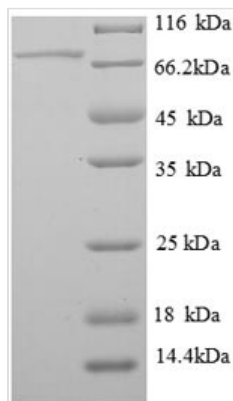




Recombinant Rat Alpha-2 antiplasmin (Serpinf1)

Product Code	CSB-EP021084RA
Abbreviation	Recombinant Rat Serpinf1 protein
Storage	The shelf life is related to many factors, storage state, buffer ingredients, storage temperature and the stability of the protein itself. Generally, the shelf life of liquid form is 6 months at -20°C/-80°C. The shelf life of lyophilized form is 12 months at -20°C/-80°C.
Uniprot No.	Q80ZA3
Product Type	Recombinant Protein
Immunogen Species	Rattus norvegicus (Rat)
Purity	Greater than 90% as determined by SDS-PAGE.
Sequence	QNVDPSSQDSPAPDSTGEPVVEEDDPFFKAPVKNLAAVSNFGYDLRLRSG AVSTGNILLSPLSVATALSALS LGAEQRTESVIHRALYYDLINNPDIHSTYKELLA SVTAPEKNFKSASRIVFERKLRVKSSFVAPLEKSYGTRPRILTGNPRIDLQEINN WVQAQMKGKIARSTREMPALSILLGVAYFKGQWATKFDSRKTTTLQDFHLDE DRTVRVPMMSDPKAILRYGLSDLNCKIAQLPLTGSMIIFFLPLTVTQNLTMIE ESLTSEFVHDIDRELKTIQAVLTPVKLKLSYEGDVTNSLQDMKLQSLFESPDFS KITGKPVKLTQVEHRAAFEWN EEGAGTSSNPDLQPVRLTFPLDYHLNRPFIFVL RDTDTGALLFIGRILDPSSST
Research Area	Others
Source	E.coli
Target Names	Serpinf1
Expression Region	20-418aa
Notes	Repeated freezing and thawing is not recommended. Store working aliquots at 4°C for up to one week.
Tag Info	N-terminal GST-tagged
Mol. Weight	71.4kDa
Protein Length	Full Length of Mature Protein

Image



(Tris-Glycine gel) Discontinuous SDS-PAGE (reduced) with 5% enrichment gel and 15% separation gel.



Description

The production of this Recombinant Rat Serpinf1 protein started with the Serpinf1 gene synthesis. And then using recombinant DNA technology, the Serpinf1 gene was inserted into an expression vector so that we could get the recombinant express plasmid of Serpinf1. Transform the plasmid into the cells of E.coli, culture the cells and we could get the desired Recombinant Rat Serpinf1 protein. But the work was not completed, protein purification and a strict QC system were performed in the last step. The purity is 90%+ determined by SDS-PAGE.

Serpinf1 (also called Dmrs91) is a gene providing an instruction of making a protein named Alpha-2 antiplasmin (Serpinf1) in mus musculus (mouse). This gene has many orthologs in multiple mammals, such as human, norway rat, pig, cattle, etc. The protein encoded by this gene is also known as serine (or cysteine) peptidase inhibitor, clade F, member 1 and is a multifunctional secreted protein with its serine-type endopeptidase inhibitor activity. This protein is involved in multiple biological processes, including cellular response to cobalt ion and glucose stimulus, positive regulation of neurogenesis and neuron projection development, etc.

Reconstitution

We recommend that this vial be briefly centrifuged prior to opening to bring the contents to the bottom. Please reconstitute protein in deionized sterile water to a concentration of 0.1-1.0 mg/mL. We recommend to add 5-50% of glycerol (final concentration) and aliquot for long-term storage at -20°C/-80°C. Our default final concentration of glycerol is 50%. Customers could use it as reference.

Shelf Life

The shelf life is related to many factors, storage state, buffer ingredients, storage temperature and the stability of the protein itself. Generally, the shelf life of liquid form is 6 months at -20°C/-80°C. The shelf life of lyophilized form is 12 months at -20°C/-80°C.