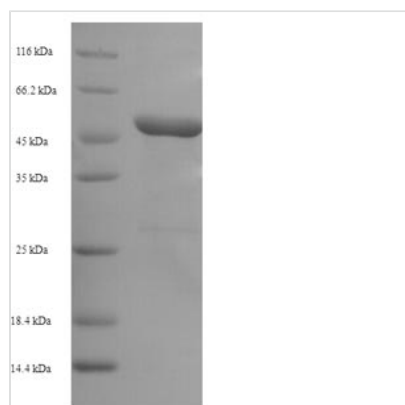




Recombinant Rat Plasminogen activator inhibitor 1 (Serpine1)

Product Code	CSB-EP021081RA
Relevance	Serine protease inhibitor. This inhibitor acts as 'bait' for tissue plasminogen activator, urokinase, protein C and matriptase-3/TMPRSS7. Its rapid interaction with PLAT may function as a major control point in the regulation of fibrinolysis .
Abbreviation	Recombinant Rat Serpine1 protein
Storage	The shelf life is related to many factors, storage state, buffer ingredients, storage temperature and the stability of the protein itself. Generally, the shelf life of liquid form is 6 months at -20°C/-80°C. The shelf life of lyophilized form is 12 months at -20°C/-80°C.
Uniprot No.	P20961
Alias	Endothelial plasminogen activator inhibitorSerpine E1
Product Type	Recombinant Protein
Immunogen Species	Rattus norvegicus (Rat)
Purity	Greater than 90% as determined by SDS-PAGE.
Sequence	SPLPESHTAQQATNFGVKVFQHVQASKDRNVVFSPPYGVSSVLAMLQLTTAG KTRQQIQDAMGFNISRGTAPALRKLSKELMGSWNKNEISTADAIFVQRDLELV QGFMPPHFFKLFRTTVKQVDFSEVERARFIINDWVERHTKGMISDLLAKGAVNE LTRLVLVNALYFNGQWKTPFLEASTHQRLFHKSDGSTISVPMMAQNNKFNYTE FTTPDGHEYDILELPYHGETLSMFIAAPFEKDVPLSAITNILDALIRQWKSNT RLPRLLILPKFSLETEVDLRGPLEKLGMTDIFSSTQADFTSLSDQEQLSVAQAL QKVKIEVNESGTVASSSTAILVSARMAPTEMVLDRLSFLFVVRHNPTETILFMGQ LMEP
Research Area	Others
Source	E.coli
Target Names	Serpine1
Protein Names	Recommended name: Plasminogen activator inhibitor 1 Short name= PAI Short name= PAI-1 Alternative name(s): Endothelial plasminogen activator inhibitor Serpin E1
Expression Region	24-402aa
Notes	Repeated freezing and thawing is not recommended. Store working aliquots at 4°C for up to one week.
Tag Info	N-terminal 6xHis-SUMO-tagged
Mol. Weight	58.6kDa
Protein Length	Full Length of Mature Protein
Image	



(Tris-Glycine gel) Discontinuous SDS-PAGE (reduced) with 5% enrichment gel and 15% separation gel.

Reconstitution

We recommend that this vial be briefly centrifuged prior to opening to bring the contents to the bottom. Please reconstitute protein in deionized sterile water to a concentration of 0.1-1.0 mg/mL. We recommend to add 5-50% of glycerol (final concentration) and aliquot for long-term storage at -20°C/-80°C. Our default final concentration of glycerol is 50%. Customers could use it as reference.

Shelf Life

The shelf life is related to many factors, storage state, buffer ingredients, storage temperature and the stability of the protein itself. Generally, the shelf life of liquid form is 6 months at -20°C/-80°C. The shelf life of lyophilized form is 12 months at -20°C/-80°C.