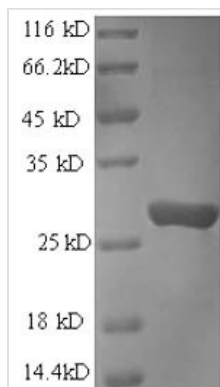




Recombinant Human Protein transport protein Sec16A (SEC16A), partial

Product Code	CSB-EP020942HU
Relevance	Defines endoplasmic reticulum exit sites (ERES) and is required for secretory cargo traffic from the endoplasmic reticulum to the Golgi apparatus. SAR1A-GTP-dependent assbly of SEC16A on the ER mbrane forms an organized scaffold defining an ERES. Required for normal transitional endoplasmic reticulum (tER) organization.
Abbreviation	Recombinant Human SEC16A protein, partial
Storage	The shelf life is related to many factors, storage state, buffer ingredients, storage temperature and the stability of the protein itself. Generally, the shelf life of liquid form is 6 months at -20°C/-80°C. The shelf life of lyophilized form is 12 months at -20°C/-80°C.
Uniprot No.	O15027
Product Type	Recombinant Proteins
Immunogen Species	Homo sapiens (Human)
Purity	Greater than 90% as determined by SDS-PAGE.
Sequence	AYLPDDKNKSIVWDEKKNQWVNLNEPEEEKKAPPPPPTSMPKTVQAAPPALP GPPGAPVNMYSRRAAGTRARYVDVLNPSGTQRSEPALAPADFVAPLAPLPIPS NLFVPTPDAAEPQLPDGTGREGPAAARGLANPEPAPEPKLSRCSSMSSLSRE VSQHFNQAPGDLPAAGGPPSGAMPFYNPAQLAQACATSGSSRLGRIGQRKH LVLN
Research Area	Transport
Source	E.coli
Target Names	SEC16A
Expression Region	2121aa-2332aa
Notes	Repeated freezing and thawing is not recommended. Store working aliquots at 4°C for up to one week.
Tag Info	N-terminal 6xHis-tagged
Mol. Weight	26.1kDa
Protein Length	Partial
Image	



(Tris-Glycine gel) Discontinuous SDS-PAGE (reduced) with 5% enrichment gel and 15% separation gel.

Shelf Life

The shelf life is related to many factors, storage state, buffer ingredients, storage temperature and the stability of the protein itself. Generally, the shelf life of liquid form is 6 months at -20°C/-80°C. The shelf life of lyophilized form is 12 months at -20°C/-80°C.