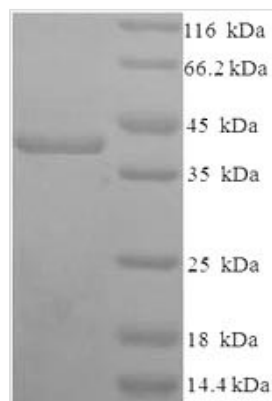




Recombinant Human Syndecan-1 (SDC1), partial

Product Code	CSB-EP020888HU
Relevance	Cell surface proteoglycan that bears both heparan sulfate and chondroitin sulfate and that links the cytoskeleton to the interstitial matrix.
Abbreviation	Recombinant Human SDC1 protein, partial
Storage	The shelf life is related to many factors, storage state, buffer ingredients, storage temperature and the stability of the protein itself. Generally, the shelf life of liquid form is 6 months at -20°C/-80°C. The shelf life of lyophilized form is 12 months at -20°C/-80°C.
Uniprot No.	P18827
Alias	CD138
Product Type	Recombinant Protein
Immunogen Species	Homo sapiens (Human)
Purity	Greater than 90% as determined by SDS-PAGE.
Sequence	QIVATNLPPEDQDGSGDDSDNFSGSGAGALQDITLSQQTPSTWKDTQLLTAIP TSPEPTGLEATAASTSTLPAGEGPKGEAVVLPEVEPGLTAREQEATPRPRET TQLPTTHLASTTTTATTAQEPATSHPHRDMQPGHHETSTPAGPSQADLHTPHT EDGGPSATERAAEDGASSQLPAAEGSGEQDFTFETSGENTAVVAVEPDRRN QSPVDQGATGASQGLLDRKEVLG
Research Area	Cancer
Source	E.coli
Target Names	SDC1
Expression Region	23-254aa
Notes	Repeated freezing and thawing is not recommended. Store working aliquots at 4°C for up to one week.
Tag Info	N-terminal 6xHis-SUMO-tagged
Mol. Weight	39.9kDa
Protein Length	Extracellular Domain

Image



(Tris-Glycine gel) Discontinuous SDS-PAGE (reduced) with 5% enrichment gel and 15% separation gel.



Description

Amino acids 23-254 constitute the expression domain of recombinant Human SDC1. This SDC1 protein is expected to have a theoretical molecular weight of 39.9 kDa. Expression of this SDC1 protein is conducted in e.coli. The SDC1 coding gene included the N-terminal 6xHis-SUMO tag, which simplifies the detection and purification processes of the recombinant SDC1 protein in following stages of expression and purification.

Syndecan-1 (SDC1) is a cell surface proteoglycan that plays a crucial role in cell-matrix interactions, cell adhesion, and signaling. As a member of the syndecan family, SDC1 is involved in various physiological processes, including development, wound healing, and immune response. It acts as a coreceptor for growth factors and cytokines, mediating their signaling pathways. SDC1 also participates in cell adhesion by binding to extracellular matrix components. In cancer, SDC1 is often dysregulated and implicated in tumor progression, angiogenesis, and metastasis. Research on SDC1 spans multiple areas, including cancer biology, immunology, and developmental biology, aiming to understand its complex functions and potential therapeutic implications in various diseases.

Reconstitution

We recommend that this vial be briefly centrifuged prior to opening to bring the contents to the bottom. Please reconstitute protein in deionized sterile water to a concentration of 0.1-1.0 mg/mL. We recommend to add 5-50% of glycerol (final concentration) and aliquot for long-term storage at -20°C/-80°C. Our default final concentration of glycerol is 50%. Customers could use it as reference.

Shelf Life

The shelf life is related to many factors, storage state, buffer ingredients, storage temperature and the stability of the protein itself. Generally, the shelf life of liquid form is 6 months at -20°C/-80°C. The shelf life of lyophilized form is 12 months at -20°C/-80°C.