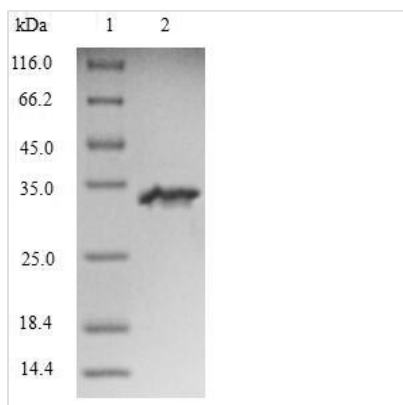




Recombinant Human Ryanodine receptor 3 (RYR3), partial

Product Code	CSB-EP020621HU
Relevance	Calcium channel that mediates the release of Ca ²⁺ from the sarcoplasmic reticulum into the cytoplasm in muscle and thereby plays a role in triggering muscle contraction. May regulate Ca ²⁺ release by other calcium channels. Calcium channel that mediates Ca ²⁺ -induced Ca ²⁺ release from the endoplasmic reticulum in non-muscle cells. Contributes to cellular calcium ion homeostasis . Plays a role in cellular calcium signaling. ¹ Publication
Abbreviation	Recombinant Human RYR3 protein, partial
Storage	The shelf life is related to many factors, storage state, buffer ingredients, storage temperature and the stability of the protein itself. Generally, the shelf life of liquid form is 6 months at -20°C/-80°C. The shelf life of lyophilized form is 12 months at -20°C/-80°C.
Uniprot No.	Q15413
Alias	Brain ryanodine receptor-calcium release channelBrain-type ryanodine receptorType 3 ryanodine receptor
Product Type	Recombinant Protein
Immunogen Species	Homo sapiens (Human)
Purity	Greater than 90% as determined by SDS-PAGE.
Sequence	DGKGIISKKEFQKAMEGQKQYTQSEIDFLLSCAEADENDMFNYVDFVDRFHEP AKDIGFNVAVLLTNLSEHMPNDSRLKCLDPAESVLNYFEPYLGRIEIMGGAKKI ERVYFEISESSRTQWEKPQVKESKRQFIFDVVNEGGEQEKMELFVNFCEdTIF EMQLASQISESDSADRPEEEEEDEDSYVLEIAGEEEEEEDGSLEPASAFAMACA SVKRNVTDFLKRATLKNLRKQYRNVKKMTAKELV
Research Area	Neuroscience
Source	E.coli
Target Names	RYR3
Expression Region	3934-4181aa
Notes	Repeated freezing and thawing is not recommended. Store working aliquots at 4°C for up to one week.
Tag Info	N-terminal 6xHis-tagged
Mol. Weight	32.5kDa
Protein Length	Partial
Image	



(Tris-Glycine gel) Discontinuous SDS-PAGE (reduced) with 5% enrichment gel and 15% separation gel.

Reconstitution

We recommend that this vial be briefly centrifuged prior to opening to bring the contents to the bottom. Please reconstitute protein in deionized sterile water to a concentration of 0.1-1.0 mg/mL. We recommend to add 5-50% of glycerol (final concentration) and aliquot for long-term storage at -20°C/-80°C. Our default final concentration of glycerol is 50%. Customers could use it as reference.

Shelf Life

The shelf life is related to many factors, storage state, buffer ingredients, storage temperature and the stability of the protein itself. Generally, the shelf life of liquid form is 6 months at -20°C/-80°C. The shelf life of lyophilized form is 12 months at -20°C/-80°C.