



Recombinant Human Ribonucleoside-diphosphate reductase large subunit (RRM1)

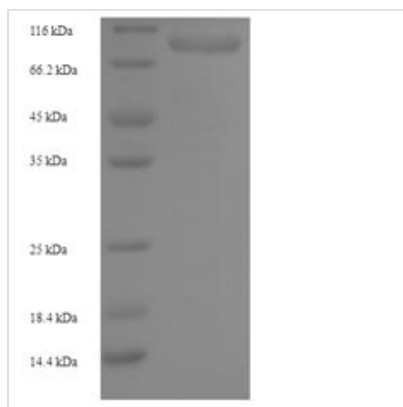
Product Code	CSB-EP020518HU
Relevance	Provides the precursors necessary for DNA synthesis. Catalyzes the biosynthesis of deoxyribonucleotides from the corresponding ribonucleotides.
Abbreviation	Recombinant Human RRM1 protein
Storage	The shelf life is related to many factors, storage state, buffer ingredients, storage temperature and the stability of the protein itself. Generally, the shelf life of liquid form is 6 months at -20°C/-80°C. The shelf life of lyophilized form is 12 months at -20°C/-80°C.
Uniprot No.	P23921
Alias	Ribonucleoside-diphosphate reductase subunit M1Ribonucleotide reductase large subunit
Product Type	Recombinant Protein
Immunogen Species	Homo sapiens (Human)
Purity	Greater than 90% as determined by SDS-PAGE.
Sequence	MHVIKRDGRQERVFMFDKITSRIQKLCYGLNMDFVDPAQITMKVVIQGLYSGVTTV ELDTLAAETAATLTTKHPDYAILAARIAVSNLHKETKKVFSDVMEDLYNYINPHN GKHSPMVAKSTLDIVLANKDRLNSAIYDRDFSYNFYGFKTLERSYLLKINGKVA ERPQHMLMRVSVGIHKEDIDAAIETYNLLSERWFTTHASPTLFNAGTNRPQLSS CFLLSMKDDSIIEGIYDTLKQCALISKSAGGIGVAVSCIRATGSYIAGTNGNSNGL VPMLRVYNNNTARYVDQGGNKRPGAFIYLEPWHLDFEFLDLKKNTGKEEQRA RDLFFALWIPDLFMKRVETNQDWSLMCPNECPGLDEVWGEEFEKLYASYEKQ GRVRKVVKAAQQLWYAIIESQTETGTPYMLYKDSCNRKSNQQNLGTIKCSNLCT EIVEYTSKDEVAVCNLASLALNMYVTSEHTYDFKKLAEVTKVVRNLNKIIDINY YPVPEACLSNKRHRPIGIGVQGLADAFILMRYPFESAEAAQLLNKQIFETIYYGAL EASCDLAKEQGPYETIEGSPVSKGILQYDMWNVTPTDLWDWKVLKEKIAKYGI RNSLLIAPMPTASTAQILGNNEISIEPYTSNIYTRRVLSGEFQIVNPHLLKDLTER GLWHEEMKNQIIACNGSIQSIPEIPDDLKQLYKTVWEISQKTVLKMAAERGAFID QSQSLNIHIAEPNYGKLTSMHFYGWKQGLKTGMYYLRTRPAANPIQFTLNKEK LKDKKEKVSKEEEEKERNTAAMVCSLENRDECLMCGS
Research Area	Epigenetics and Nuclear Signaling
Source	E.coli
Target Names	RRM1
Expression Region	1-792aa
Notes	Repeated freezing and thawing is not recommended. Store working aliquots at 4°C for up to one week.
Tag Info	N-terminal 6xHis-SUMO-tagged



Mol. Weight 106.1kDa

Protein Length Full Length

Image



(Tris-Glycine gel) Discontinuous SDS-PAGE (reduced) with 5% enrichment gel and 15% separation gel.

Reconstitution

We recommend that this vial be briefly centrifuged prior to opening to bring the contents to the bottom. Please reconstitute protein in deionized sterile water to a concentration of 0.1-1.0 mg/mL. We recommend to add 5-50% of glycerol (final concentration) and aliquot for long-term storage at -20°C/-80°C. Our default final concentration of glycerol is 50%. Customers could use it as reference.

Shelf Life

The shelf life is related to many factors, storage state, buffer ingredients, storage temperature and the stability of the protein itself. Generally, the shelf life of liquid form is 6 months at -20°C/-80°C. The shelf life of lyophilized form is 12 months at -20°C/-80°C.