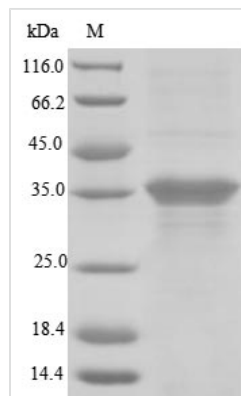




Recombinant Human Blood group Rh (D) polypeptide (RHD), partial

Product Code	CSB-EP019677HU
Relevance	May be part of an oligomeric complex which is likely to have a transport or channel function in the erythrocyte membrane.
Abbreviation	Recombinant Human RHD protein, partial
Storage	The shelf life is related to many factors, storage state, buffer ingredients, storage temperature and the stability of the protein itself. Generally, the shelf life of liquid form is 6 months at -20°C/-80°C. The shelf life of lyophilized form is 12 months at -20°C/-80°C.
Uniprot No.	Q02161
Product Type	Recombinant Protein
Immunogen Species	Homo sapiens (Human)
Purity	Greater than 85% as determined by SDS-PAGE.
Sequence	LNLKIWKAPHEAKYFDDQVFWKFPHLAVGF
Research Area	Cardiovascular
Source	E.coli
Target Names	RHD
Protein Names	RHXIIIRh polypeptide 2Short name:RhPIIRhesus D antigenCD_antigen: CD240D
Expression Region	388-417aa
Notes	Repeated freezing and thawing is not recommended. Store working aliquots at 4°C for up to one week.
Tag Info	N-terminal 6xHis-GST-tagged
Mol. Weight	33.6 kDa
Protein Length	Partial

Image



(Tris-Glycine gel) Discontinuous SDS-PAGE (reduced) with 5% enrichment gel and 15% separation gel.



Description

The N-terminal 6xHis-GST tag was fused to the gene fragment corresponding to the 388-417aa of the human RHD protein and then was cloned into an expression vector. The expression vector was transformed into the E.coli for expression. The generated product was purified and separated to obtain the recombinant human RHD protein. Its purity is higher than 85%. It showed an apparent molecular weight of about 34 kDa under SDS-PAGE condition. This recombinant human RHD protein may be used in cardiovascular research.

RHD is a gene encoding a protein named blood group Rh(D) polypeptide and belongs Rh subfamily which consist of RHD, RHCE, RhAG, RhBG, and RhCG. RHD has sequence similarity to others and is restricted to tissues or cell lines expressing erythroid characters. It was proposed that the erythrocyte Rh complex is a heterotrimer of RhAG, RhD, and RhCE protein subunits. Diseases associated with RHD include Hemolytic Disease Of Fetus And Newborn, Rh-Induced and Blood Group, Rh System.

Reconstitution

We recommend that this vial be briefly centrifuged prior to opening to bring the contents to the bottom. Please reconstitute protein in deionized sterile water to a concentration of 0.1-1.0 mg/mL. We recommend to add 5-50% of glycerol (final concentration) and aliquot for long-term storage at -20°C/-80°C. Our default final concentration of glycerol is 50%. Customers could use it as reference.

Shelf Life

The shelf life is related to many factors, storage state, buffer ingredients, storage temperature and the stability of the protein itself. Generally, the shelf life of liquid form is 6 months at -20°C/-80°C. The shelf life of lyophilized form is 12 months at -20°C/-80°C.