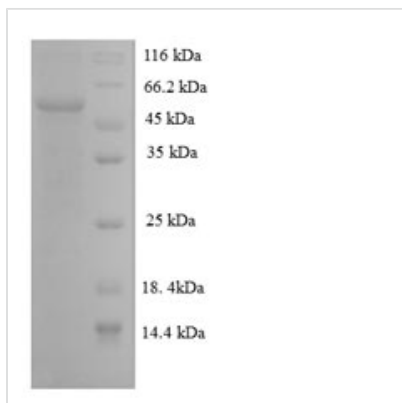




# Recombinant Rat Regucalcin (Rgn)

<b>Product Code</b>	CSB-EP019630RA
<b>Relevance</b>	Gluconolactonase with low activity towards other sugar lactones, including gulonolactone and galactonolactone. Catalyzes a key step in ascorbic acid (vitamin C) biosynthesis. Can also hydrolyze diisopropyl phosphorofluoridate and phenylacetate (in vitro). Calcium-binding protein. Modulates Ca <sup>2+</sup> signaling, and Ca <sup>2+</sup> -dependent cellular processes and enzyme activities.
<b>Abbreviation</b>	Recombinant Rat Rgn protein
<b>Storage</b>	The shelf life is related to many factors, storage state, buffer ingredients, storage temperature and the stability of the protein itself. Generally, the shelf life of liquid form is 6 months at -20°C/-80°C. The shelf life of lyophilized form is 12 months at -20°C/-80°C.
<b>Uniprot No.</b>	Q03336
<b>Alias</b>	Gluconolactonase (EC:3.1.1.17) Short name: GNL Senescence marker protein 30 Short name: SMP-30
<b>Product Type</b>	Recombinant Protein
<b>Immunogen Species</b>	Rattus norvegicus (Rat)
<b>Purity</b>	Greater than 90% as determined by SDS-PAGE.
<b>Sequence</b>	MSSIKIECVLRENYRCGESPVWEEASKCLLFVDIPSKTVCRWDSISNRVQRVG VDAPVSSVALRQSGGYVATIGTKFCALNWEDQSVFILAMVDEDKKNRNFNDG KVDPAGRYFAGTMAEETAPAVLERHQGSLYSLFPDHSVKKYFDQVDISNGLD WSLDHKIFYIDSLSYTVDAFDYDLPTGQISNRRTVYKMEKDEQIPDGMCIDVE GKLWVACYNGGRVIRLDPETGKRLQTVKLPVDKTTSCCFGGKDYSEMYVTCA RDGMSAEGLLRQPDAGNIFKITGLGVKGIAPYSYAG
<b>Research Area</b>	Others
<b>Source</b>	E.coli
<b>Target Names</b>	Rgn
<b>Protein Names</b>	Recommended name: Regucalcin Short name= RC Alternative name(s): Gluconolactonase Short name= GNL EC= 3.1.1.17 Senescence marker protein 30 Short name= SMP-30
<b>Expression Region</b>	1-299aa
<b>Notes</b>	Repeated freezing and thawing is not recommended. Store working aliquots at 4°C for up to one week.
<b>Tag Info</b>	N-terminal 6xHis-SUMO-tagged
<b>Mol. Weight</b>	49.4kDa
<b>Protein Length</b>	Full Length
<b>Image</b>	



(Tris-Glycine gel) Discontinuous SDS-PAGE (reduced) with 5% enrichment gel and 15% separation gel.

### Reconstitution

We recommend that this vial be briefly centrifuged prior to opening to bring the contents to the bottom. Please reconstitute protein in deionized sterile water to a concentration of 0.1-1.0 mg/mL. We recommend to add 5-50% of glycerol (final concentration) and aliquot for long-term storage at -20°C/-80°C. Our default final concentration of glycerol is 50%. Customers could use it as reference.

### Shelf Life

The shelf life is related to many factors, storage state, buffer ingredients, storage temperature and the stability of the protein itself. Generally, the shelf life of liquid form is 6 months at -20°C/-80°C. The shelf life of lyophilized form is 12 months at -20°C/-80°C.