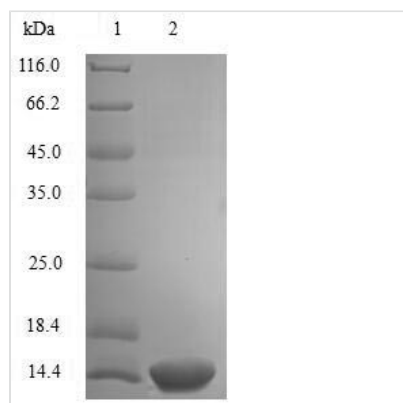




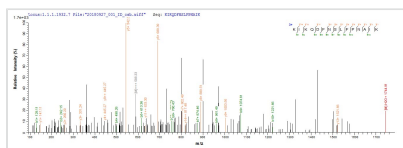
Recombinant Mouse Resistin (Retn)

| | |
|--------------------------|---|
| Product Code | CSB-EP019573MO |
| Relevance | Hormone that ses to suppress insulin ability to stimulate glucose uptake into adipose cells. Potentially links obesity to diabetes. |
| Abbreviation | Recombinant Mouse Retn protein |
| Storage | The shelf life is related to many factors, storage state, buffer ingredients, storage temperature and the stability of the protein itself. Generally, the shelf life of liquid form is 6 months at -20°C/-80°C. The shelf life of lyophilized form is 12 months at -20°C/-80°C. |
| Uniprot No. | Q99P87 |
| Alias | Adipose tissue-specific secretory factor ;ADSFAdipose-specific cysteine-rich secreted protein A12-alpha;Cysteine-rich secreted protein FIZZ3 |
| Product Type | Recombinant Protein |
| Immunogen Species | Mus musculus (Mouse) |
| Purity | Greater than 90% as determined by SDS-PAGE. |
| Sequence | SSMPLCPIDEAIDKKIKQDFNSLFPNAIKNIGLNCWTVSSRGKLASCPEGTAVLS CSCGSACGSWDIREEKVCHCQCARIDWTAARCCKLQVAS |
| Research Area | Others |
| Source | E.coli |
| Target Names | Retn |
| Expression Region | 21-114aa |
| Notes | Repeated freezing and thawing is not recommended. Store working aliquots at 4°C for up to one week. |
| Tag Info | N-terminal 6xHis-tagged |
| Mol. Weight | 14.2kDa |
| Protein Length | Full Length of Mature Protein |

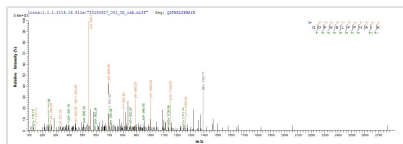
Image



(Tris-Glycine gel) Discontinuous SDS-PAGE (reduced) with 5% enrichment gel and 15% separation gel.



Based on the SEQUEST from database of E.coli host and target protein, the LC-MS/MS Analysis result of CSB-EP019573MO could indicate that this peptide derived from E.coli-expressed Mus musculus (Mouse) Retn.



Based on the SEQUEST from database of E.coli host and target protein, the LC-MS/MS Analysis result of CSB-EP019573MO could indicate that this peptide derived from E.coli-expressed Mus musculus (Mouse) Retn.

Reconstitution

We recommend that this vial be briefly centrifuged prior to opening to bring the contents to the bottom. Please reconstitute protein in deionized sterile water to a concentration of 0.1-1.0 mg/mL. We recommend to add 5-50% of glycerol (final concentration) and aliquot for long-term storage at -20°C/-80°C. Our default final concentration of glycerol is 50%. Customers could use it as reference.

Shelf Life

The shelf life is related to many factors, storage state, buffer ingredients, storage temperature and the stability of the protein itself. Generally, the shelf life of liquid form is 6 months at -20°C/-80°C. The shelf life of lyophilized form is 12 months at -20°C/-80°C.