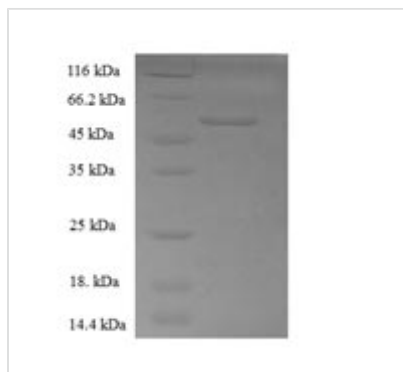




# Recombinant human Retinol dehydrogenase 11 (RDH11), partial

<b>Product Code</b>	CSB-EP019523HU
<b>Relevance</b>	Exhibits an oxidoreductive catalytic activity towards retinoids. Most efficient as an NADPH-dependent retinal reductase. Displays high activity towards 9-cis and all-trans-retinol. Also involved in the metabolism of short-chain aldehydes. No steroid dehydrogenase activity detected.
<b>Abbreviation</b>	Recombinant Human RDH11 protein, partial
<b>Storage</b>	The shelf life is related to many factors, storage state, buffer ingredients, storage temperature and the stability of the protein itself. Generally, the shelf life of liquid form is 6 months at -20°C/-80°C. The shelf life of lyophilized form is 12 months at -20°C/-80°C.
<b>Uniprot No.</b>	Q8TC12
<b>Alias</b>	Androgen-regulated short-chain dehydrogenase/reductase 1HCV core-binding protein HCBP12;Prostate short-chain dehydrogenase/reductase 1Retinal reductase 1 ;RalR1Short chain dehydrogenase/reductase family 7C member 1
<b>Product Type</b>	Recombinant Protein
<b>Immunogen Species</b>	Homo sapiens (Human)
<b>Purity</b>	Greater than 90% as determined by SDS-PAGE.
<b>Sequence</b>	PQIRKMLSSGVCTSTVQLPGKVVVVTGANTGIGKETAKELAQRGARVYLACRD VEKGELVAKEIQTGGNQQVLVRKLDLSDTKSIRAFAGFLAEEKHLHVLINNA GVMMCPYSKTADGFEMHIGVNHGLHLLTHLLLEKLKESAPSRIVNVSSLAHHL GRIHFHNLQGEKFYNAGLAYCHSKLANILFTQELARRLKSGSVTTYSVHPGTV QSELVRHSSFMRWMWWLFSFFIKTPQQGAQTSLHCALTEGLEILSGNHFSDC HVAWVSAQARNETIARRLLWDVSCDLLGLPID
<b>Research Area</b>	Neuroscience
<b>Source</b>	E.coli
<b>Target Names</b>	RDH11
<b>Expression Region</b>	22-318aa
<b>Notes</b>	Repeated freezing and thawing is not recommended. Store working aliquots at 4°C for up to one week.
<b>Tag Info</b>	N-terminal 6xHis-SUMO-tagged
<b>Mol. Weight</b>	49.0kDa
<b>Protein Length</b>	Cytoplasmic Domain
<b>Image</b>	



(Tris-Glycine gel) Discontinuous SDS-PAGE (reduced) with 5% enrichment gel and 15% separation gel.

## Reconstitution

We recommend that this vial be briefly centrifuged prior to opening to bring the contents to the bottom. Please reconstitute protein in deionized sterile water to a concentration of 0.1-1.0 mg/mL. We recommend to add 5-50% of glycerol (final concentration) and aliquot for long-term storage at -20°C/-80°C. Our default final concentration of glycerol is 50%. Customers could use it as reference.

## Shelf Life

The shelf life is related to many factors, storage state, buffer ingredients, storage temperature and the stability of the protein itself. Generally, the shelf life of liquid form is 6 months at -20°C/-80°C. The shelf life of lyophilized form is 12 months at -20°C/-80°C.