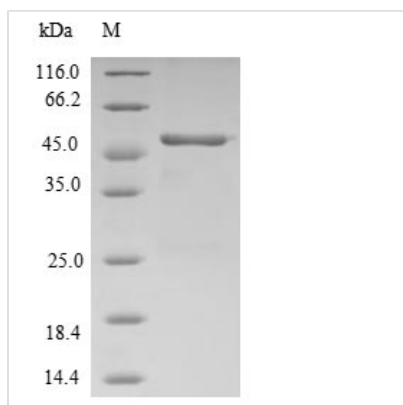




Recombinant Human Ras-related protein Rap-2b (RAP2B)

Product Code	CSB-EP019327HU
Relevance	Small GTP-binding protein which cycles between a GDP-bound inactive and a GTP-bound active form. Involved in EGFR and CHRM3 signaling pathways through stimulation of PLCE1. May play a role in cytoskeletal rearrangements and regulate cell spreading through activation of the effector TNIK. May regulate membrane vesiculation in red blood cells.
Abbreviation	Recombinant Human RAP2B protein
Storage	The shelf life is related to many factors, storage state, buffer ingredients, storage temperature and the stability of the protein itself. Generally, the shelf life of liquid form is 6 months at -20°C/-80°C. The shelf life of lyophilized form is 12 months at -20°C/-80°C.
Uniprot No.	P61225
Product Type	Recombinant Protein
Immunogen Species	Homo sapiens (Human)
Purity	Greater than 90% as determined by SDS-PAGE.
Sequence	MREYKVVVLGSGGVGKSALTVQFVTGSFIEKYDPTIEDFYRKEIEVDSSPSVLEI LDTAGTEQFASMRDLYIKNGQGFIIVSLVNQQSFQDIKPMRDQIIRVKRYERV PMILVGNKVDLEGEREVSYGEGKALAEWSCPFMETSAKNKASVDELFAEIVR QMNYAAQPNGDEGCCSAC
Research Area	Signal Transduction
Source	E.coli
Target Names	RAP2B
Protein Names	Recommended name: Ras-related protein Rap-2b
Expression Region	1-183aa
Notes	Repeated freezing and thawing is not recommended. Store working aliquots at 4°C for up to one week.
Tag Info	N-terminal GST-tagged
Mol. Weight	47.2kDa
Protein Length	Full Length
Image	



(Tris-Glycine gel) Discontinuous SDS-PAGE (reduced) with 5% enrichment gel and 15% separation gel.

Reconstitution

We recommend that this vial be briefly centrifuged prior to opening to bring the contents to the bottom. Please reconstitute protein in deionized sterile water to a concentration of 0.1-1.0 mg/mL. We recommend to add 5-50% of glycerol (final concentration) and aliquot for long-term storage at -20°C/-80°C. Our default final concentration of glycerol is 50%. Customers could use it as reference.

Shelf Life

The shelf life is related to many factors, storage state, buffer ingredients, storage temperature and the stability of the protein itself. Generally, the shelf life of liquid form is 6 months at -20°C/-80°C. The shelf life of lyophilized form is 12 months at -20°C/-80°C.