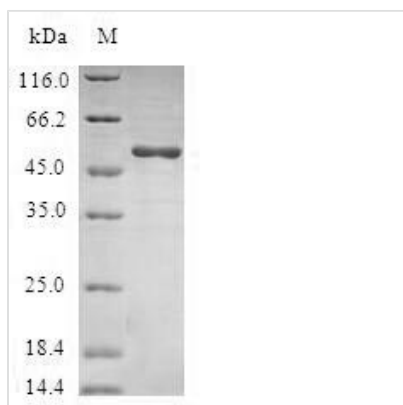




# Recombinant Human Ras-related protein Ral-B (RALB)

<b>Product Code</b>	CSB-EP019297HU
<b>Relevance</b>	Multifunctional GTPase involved in a variety of cellular processes including gene expression, cell migration, cell proliferation, oncogenic transformation and membrane trafficking. Accomplishes its multiple functions by interacting with distinct downstream effectors. Acts as a GTP sensor for GTP-dependent exocytosis of dense core vesicles. Required both to stabilize the assembly of the exocyst complex and to localize functional exocyst complexes to the leading edge of migrating cells. Plays a role in the late stages of cytokinesis and is required for the abscission of the bridge joining the sister cells emerging from mitosis. Required for suppression of apoptosis.
<b>Abbreviation</b>	Recombinant Human RALB protein
<b>Storage</b>	The shelf life is related to many factors, storage state, buffer ingredients, storage temperature and the stability of the protein itself. Generally, the shelf life of liquid form is 6 months at -20°C/-80°C. The shelf life of lyophilized form is 12 months at -20°C/-80°C.
<b>Uniprot No.</b>	P11234
<b>Product Type</b>	Recombinant Protein
<b>Immunogen Species</b>	Homo sapiens (Human)
<b>Purity</b>	Greater than 90% as determined by SDS-PAGE.
<b>Sequence</b>	MAANKSKGQSSSLALHKVIMVGSGGVGKSALTLQFMDEFVEDYEPTKADSYR KKVVLGDGEEVQIDILDTAGQEDYAAIRDNYFRSGEGFLLVFSITEHESFTATAEF REQILRVKAEEDKIPLLVGNKSDLEERRQVPVEEARSKAEEWGVQYVETSAK TRANVDKVFDFLMREIRTKKMSSENKDKNGKKSSKNKKSFKERC
<b>Research Area</b>	Signal Transduction
<b>Source</b>	E.coli
<b>Target Names</b>	RALB
<b>Protein Names</b>	Recommended name: Ras-related protein Ral-B
<b>Expression Region</b>	1-206aa
<b>Notes</b>	Repeated freezing and thawing is not recommended. Store working aliquots at 4°C for up to one week.
<b>Tag Info</b>	N-terminal GST-tagged
<b>Mol. Weight</b>	50.1kDa
<b>Protein Length</b>	Full Length
<b>Image</b>	



(Tris-Glycine gel) Discontinuous SDS-PAGE (reduced) with 5% enrichment gel and 15% separation gel.

### Reconstitution

We recommend that this vial be briefly centrifuged prior to opening to bring the contents to the bottom. Please reconstitute protein in deionized sterile water to a concentration of 0.1-1.0 mg/mL. We recommend to add 5-50% of glycerol (final concentration) and aliquot for long-term storage at -20°C/-80°C. Our default final concentration of glycerol is 50%. Customers could use it as reference.

### Shelf Life

The shelf life is related to many factors, storage state, buffer ingredients, storage temperature and the stability of the protein itself. Generally, the shelf life of liquid form is 6 months at -20°C/-80°C. The shelf life of lyophilized form is 12 months at -20°C/-80°C.