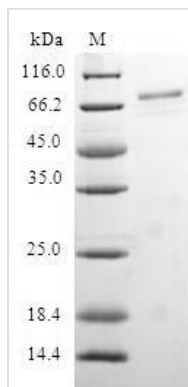




Recombinant Human mRNA export factor (RAE1)

Product Code	CSB-EP019276HU
Relevance	Binds mRNA. May function in nucleocytoplasmic transport and in directly or indirectly attaching cytoplasmic mRNPs to the cytoskeleton.
Abbreviation	Recombinant Human RAE1 protein
Storage	The shelf life is related to many factors, storage state, buffer ingredients, storage temperature and the stability of the protein itself. Generally, the shelf life of liquid form is 6 months at -20°C/-80°C. The shelf life of lyophilized form is 12 months at -20°C/-80°C.
Uniprot No.	P78406
Alias	Rae1 protein homolog mRNA-associated protein mrnp 41
Product Type	Recombinant Protein
Immunogen Species	Homo sapiens (Human)
Purity	Greater than 90% as determined by SDS-PAGE.
Sequence	MSLFGTTSGFGTSGTSMFGSATTDNHNPMKDIEVTSSPDDSIGCLSFSPPTLP GNFLIAGSWANDVRCWEVQDSGQTIPKAQQMHTGPVLDVCWSDDGSKVFTA SCDKTAKMWDLSSNQAIQIAQHDA PVKTIHWIKAPNYSCVMTGSDKTLKFW DTRSSNPMMVLQLPERCYCADVIYPMVAVATAERGLIVYQLENQPSEFRRIES PLKHQHRCVAIFKDKQNKPTGFALGSIEGRVAIHYPNPAPKDNFTFKCHRSN GTNTSAPQDIYAVNGIAFHPVHGTLATVGSDGRFSFWDKDARTKLKTSEQLDQ PISACCFNHNGNIFAYASSYDWSKGHEFYNPQKKNYIFLRNAAEELKPRNKK
Research Area	others
Source	E.coli
Target Names	RAE1
Protein Names	Recommended name: mRNA export factor Alternative name(s): Rae1 protein homolog mRNA-associated protein mrnp 41
Expression Region	1-368aa
Notes	Repeated freezing and thawing is not recommended. Store working aliquots at 4°C for up to one week.
Tag Info	N-terminal GST-tagged
Mol. Weight	68.0kDa
Protein Length	Full Length
Image	



(Tris-Glycine gel) Discontinuous SDS-PAGE (reduced) with 5% enrichment gel and 15% separation gel.

Reconstitution

We recommend that this vial be briefly centrifuged prior to opening to bring the contents to the bottom. Please reconstitute protein in deionized sterile water to a concentration of 0.1-1.0 mg/mL. We recommend to add 5-50% of glycerol (final concentration) and aliquot for long-term storage at -20°C/-80°C. Our default final concentration of glycerol is 50%. Customers could use it as reference.

Shelf Life

The shelf life is related to many factors, storage state, buffer ingredients, storage temperature and the stability of the protein itself. Generally, the shelf life of liquid form is 6 months at -20°C/-80°C. The shelf life of lyophilized form is 12 months at -20°C/-80°C.