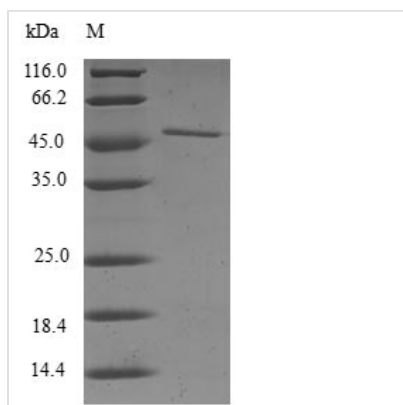




# Recombinant Human Ras-related C3 botulinum toxin substrate 3 (RAC3)

|                          |  |
|--------------------------|--|
| <b>Product Code</b>      | CSB-EP019249HU   |
| <b>Relevance</b>         | Plasma membrane-associated small GTPase which cycles between an active GTP-bound and inactive GDP-bound state. In active state binds to a variety of effector proteins to regulate cellular responses, such as cell spreading and the formation of actin-based protrusions including lamellipodia and membrane ruffles. Promotes cell adhesion and spreading on fibrinogen in a CIB1 and alpha-IIb/beta3 integrin-mediated manner. |
| <b>Abbreviation</b>      | Recombinant Human RAC3 protein   |
| <b>Storage</b>           | The shelf life is related to many factors, storage state, buffer ingredients, storage temperature and the stability of the protein itself. Generally, the shelf life of liquid form is 6 months at -20°C/-80°C. The shelf life of lyophilized form is 12 months at -20°C/-80°C.  |
| <b>Uniprot No.</b>       | P60763   |
| <b>Alias</b>             | p21-Rac3   |
| <b>Product Type</b>      | Recombinant Protein  |
| <b>Immunogen Species</b> | Homo sapiens (Human)   |
| <b>Purity</b>            | Greater than 90% as determined by SDS-PAGE.  |
| <b>Sequence</b>          | MQAIKCVVVGDGAVGKTCLLISYTTNAFPGEYIPTVFDNYSANVMVDGKPVNL<br>GLWDTAGQEDYDRLRPLSYPTQDVFLICFSLVSPASFENVRAKWYPEVRHHC<br>PHTPILLVGTKLDRDDKDTIERLRDKKLAPITYPQGLAMAREIGSVKYLECSAL<br>TQRGLKTVFDEAIRAVLCPPPVKKPGKKC   |
| <b>Research Area</b>     | Signal Transduction  |
| <b>Source</b>            | E.coli   |
| <b>Target Names</b>      | RAC3   |
| <b>Protein Names</b>     | Recommended name: Ras-related C3 botulinum toxin substrate 3 Alternative name(s): p21-Rac3   |
| <b>Expression Region</b> | 1-192aa  |
| <b>Notes</b>             | Repeated freezing and thawing is not recommended. Store working aliquots at 4°C for up to one week.  |
| <b>Tag Info</b>          | N-terminal GST-tagged  |
| <b>Mol. Weight</b>       | 48.0kDa  |
| <b>Protein Length</b>    | Full Length  |
| <b>Image</b>             |  |



(Tris-Glycine gel) Discontinuous SDS-PAGE (reduced) with 5% enrichment gel and 15% separation gel.

### Reconstitution

We recommend that this vial be briefly centrifuged prior to opening to bring the contents to the bottom. Please reconstitute protein in deionized sterile water to a concentration of 0.1-1.0 mg/mL. We recommend to add 5-50% of glycerol (final concentration) and aliquot for long-term storage at -20°C/-80°C. Our default final concentration of glycerol is 50%. Customers could use it as reference.

### Shelf Life

The shelf life is related to many factors, storage state, buffer ingredients, storage temperature and the stability of the protein itself. Generally, the shelf life of liquid form is 6 months at -20°C/-80°C. The shelf life of lyophilized form is 12 months at -20°C/-80°C.