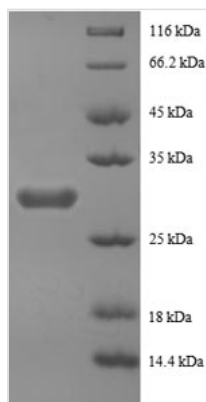




# Recombinant Human Peptide YY protein (PYY), partial

<b>Product Code</b>	CSB-EP019128HU1
<b>Relevance</b>	This gut peptide inhibits exocrine pancreatic secretion, has a vasoconstrictory action and inhibits jejunal and colonic mobility.
<b>Abbreviation</b>	Recombinant Human PYY protein, partial
<b>Storage</b>	The shelf life is related to many factors, storage state, buffer ingredients, storage temperature and the stability of the protein itself. Generally, the shelf life of liquid form is 6 months at -20°C/-80°C. The shelf life of lyophilized form is 12 months at -20°C/-80°C.
<b>Uniprot No.</b>	P10082
<b>Alias</b>	PYY-I
<b>Product Type</b>	Recombinant Protein
<b>Immunogen Species</b>	Homo sapiens (Human)
<b>Purity</b>	Greater than 90% as determined by SDS-PAGE.
<b>Sequence</b>	IKPEAPREDASPEELNRYRYASLRHYLNLVTRQRY
<b>Research Area</b>	Metabolism
<b>Source</b>	E.coli
<b>Target Names</b>	PYY
<b>Expression Region</b>	31-64aa
<b>Notes</b>	Repeated freezing and thawing is not recommended. Store working aliquots at 4°C for up to one week.
<b>Tag Info</b>	N-terminal GST-tagged
<b>Mol. Weight</b>	31.1kDa
<b>Protein Length</b>	partial

## Image



(Tris-Glycine gel) Discontinuous SDS-PAGE (reduced) with 5% enrichment gel and 15% separation gel.



## Description

The expression region of this recombinant Human PYY covers amino acids 31-64. This PYY protein is expected to have a theoretical molecular weight of 31.1 kDa. This PYY protein is produced using e.coli expression system. The PYY coding gene included the N-terminal GST tag, which simplifies the detection and purification processes of the recombinant PYY protein in following stages of expression and purification.

Human peptide YY (PYY) is a peptide hormone that plays a crucial role in appetite regulation and energy homeostasis. Produced and released by enteroendocrine cells in the gastrointestinal tract, particularly in the ileum and colon, PYY is released in response to food intake. It functions as an appetite suppressant by signaling to the brain, where it binds to Y2 receptors in the hypothalamus. The main function of PYY is to reduce appetite, slow down gastric emptying, and inhibit pancreatic secretion, collectively contributing to the feeling of satiety and the regulation of energy balance. Research on PYY often focuses on its potential as a therapeutic target for obesity and metabolic disorders. Understanding its intricate role in appetite control provides valuable insights into the complex mechanisms of energy regulation in the human body.

## Reconstitution

We recommend that this vial be briefly centrifuged prior to opening to bring the contents to the bottom. Please reconstitute protein in deionized sterile water to a concentration of 0.1-1.0 mg/mL. We recommend to add 5-50% of glycerol (final concentration) and aliquot for long-term storage at -20°C/-80°C. Our default final concentration of glycerol is 50%. Customers could use it as reference.

## Shelf Life

The shelf life is related to many factors, storage state, buffer ingredients, storage temperature and the stability of the protein itself. Generally, the shelf life of liquid form is 6 months at -20°C/-80°C. The shelf life of lyophilized form is 12 months at -20°C/-80°C.