



Recombinant Human Receptor-type tyrosine-protein phosphatase beta (PTPRB), partial

Product Code	CSB-EP019048HU
Relevance	Plays an important role in blood vessel remodeling and angiogenesis. Not necessary for the initial formation of blood vessels, but is essential for their maintenance and remodeling. Can induce dephosphorylation of TEK/TIE2, CDH5/VE-cadherin and KDR/VEGFR-2. Regulates angiopoietin-TIE2 signaling in endothelial cells. Acts as a negative regulator of TIE2, and controls TIE2 driven endothelial cell proliferation, which in turn affects blood vessel remodeling during embryonic development and determines blood vessel size during perinatal growth. Essential for the maintenance of endothelial cell contact integrity and for the adhesive function of VE-cadherin in endothelial cells and this requires the presence of plakoglobin .
Abbreviation	Recombinant Human PTPRB protein, partial
Storage	The shelf life is related to many factors, storage state, buffer ingredients, storage temperature and the stability of the protein itself. Generally, the shelf life of liquid form is 6 months at -20°C/-80°C. The shelf life of lyophilized form is 12 months at -20°C/-80°C.
Uniprot No.	P23467
Alias	Vascular endothelial protein tyrosine phosphatase ;VE-PTP
Product Type	Recombinant Protein
Immunogen Species	Homo sapiens (Human)
Purity	Greater than 90% as determined by SDS-PAGE.
Sequence	RQKVSHGRERPSARLSIRDRPLSVHLNLGQKGNRKTSCPIKINQFEGHFMKL QADSNYLLSKEYEELKDVGRNQSCDIALLPENRGKNRYNNILPYDATRVKLSN VDDDPCCSDYINASYIPGNNFRREYIVTQGGLPGTKDDFWKMVWEQNVHNIVM VTQCVEKGRVKCDHYWPADQDSLYYGDLILQMLSESVLPEWTIREFKICGEEQ LDAHRLIRHFHYTVWPDHGVPETTQSLIQFVRTVRDYINRSPGAGPTVVHCSA GVGRTGTFIALDRILQQLDSKDSVDIYGAVHDLRLHRVHVMVQTECQYVYLHQC VRDVLRLARKLRSEQENPLFPIYENVNPEYHRDPVYSRH
Research Area	Signal Transduction
Source	E.coli
Target Names	PTPRB
Protein Names	Recommended name: Receptor-type tyrosine-protein phosphatase beta Short name= Protein-tyrosine phosphatase beta Short name= R-PTP-beta EC= 3.1.3.48 Alternative name(s): Vascular endothelial protein tyrosine phosphatase Sho
Expression Region	1643-1997aa
Notes	Repeated freezing and thawing is not recommended. Store working aliquots at



4°C for up to one week.

Tag Info

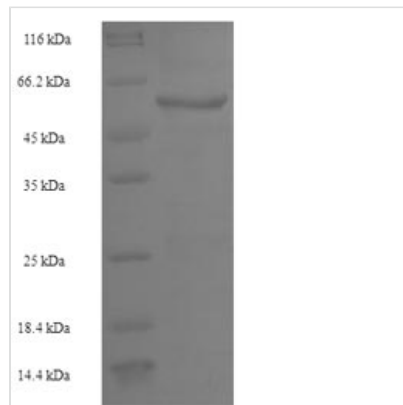
N-terminal 6xHis-SUMO-tagged

Mol. Weight

57.4kDa

Protein Length

Cytoplasmic Domain

Image


(Tris-Glycine gel) Discontinuous SDS-PAGE (reduced) with 5% enrichment gel and 15% separation gel.

Reconstitution

We recommend that this vial be briefly centrifuged prior to opening to bring the contents to the bottom. Please reconstitute protein in deionized sterile water to a concentration of 0.1-1.0 mg/mL. We recommend to add 5-50% of glycerol (final concentration) and aliquot for long-term storage at -20°C/-80°C. Our default final concentration of glycerol is 50%. Customers could use it as reference.

Shelf Life

The shelf life is related to many factors, storage state, buffer ingredients, storage temperature and the stability of the protein itself. Generally, the shelf life of liquid form is 6 months at -20°C/-80°C. The shelf life of lyophilized form is 12 months at -20°C/-80°C.