

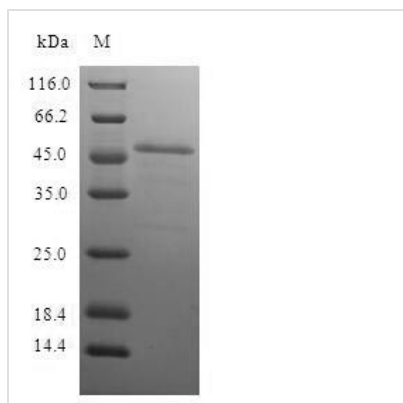


# Recombinant Human Proteasome subunit beta type-10 (PSMB10)

<b>Product Code</b>	CSB-EP018877HU
<b>Relevance</b>	The proteasome is a multicatalytic proteinase complex which is characterized by its ability to cleave peptides with Arg, Phe, Tyr, Leu, and Glu adjacent to the leaving group at neutral or slightly basic pH. The proteasome has an ATP-dependent proteolytic activity. This subunit is involved in antigen processing to generate class I binding peptides.
<b>Abbreviation</b>	Recombinant Human PSMB10 protein
<b>Storage</b>	The shelf life is related to many factors, storage state, buffer ingredients, storage temperature and the stability of the protein itself. Generally, the shelf life of liquid form is 6 months at -20°C/-80°C. The shelf life of lyophilized form is 12 months at -20°C/-80°C.
<b>Uniprot No.</b>	P40306
<b>Alias</b>	Low molecular mass protein 10 Macropain subunit MECl-1 Multicatalytic endopeptidase complex subunit MECl-1 Proteasome MECl-1 Proteasome subunit beta-2i
<b>Product Type</b>	Recombinant Protein
<b>Immunogen Species</b>	Homo sapiens (Human)
<b>Purity</b>	Greater than 90% as determined by SDS-PAGE.
<b>Sequence</b>	MLKPALEPRGGFSFENCQRNASLERVLPGLKVPHARKTGTTIAGLVFQDGVIL GADTRATNDSVVADKSCEKIHFIAPKIYCCGAGVAADAEMTTTRMVASKMELHA LSTGREPRVATVTRILRQTLFRYQGHVGASLIVGGVDLTGPQLYGVHPHGSYS RLPFTALGSGQDAALAVLEDRFQPNMTLEAAQGLLVEAVTAGILGDLGSGGNV DACVITKTGAKLLRTLSSPTEPVKRSGRYHFVPGTTAVLTQTVKPLTLELVEET VQAMEVE
<b>Research Area</b>	Immunology
<b>Source</b>	E.coli
<b>Target Names</b>	PSMB10
<b>Protein Names</b>	Recommended name: Proteasome subunit beta type-10 EC=3.4.25.1 Alternative name(s): Low molecular mass protein 10 Macropain subunit MECl-1 Multicatalytic endopeptidase complex subunit MECl-1 Proteasome MECl-1 Proteasome subunit beta
<b>Expression Region</b>	1-273aa
<b>Notes</b>	Repeated freezing and thawing is not recommended. Store working aliquots at 4°C for up to one week.
<b>Tag Info</b>	N-terminal GST-tagged
<b>Mol. Weight</b>	51.6kDa


**Protein Length**

Full Length

**Image**


(Tris-Glycine gel) Discontinuous SDS-PAGE (reduced) with 5% enrichment gel and 15% separation gel.

**Reconstitution**

We recommend that this vial be briefly centrifuged prior to opening to bring the contents to the bottom. Please reconstitute protein in deionized sterile water to a concentration of 0.1-1.0 mg/mL. We recommend to add 5-50% of glycerol (final concentration) and aliquot for long-term storage at -20°C/-80°C. Our default final concentration of glycerol is 50%. Customers could use it as reference.

**Shelf Life**

The shelf life is related to many factors, storage state, buffer ingredients, storage temperature and the stability of the protein itself. Generally, the shelf life of liquid form is 6 months at -20°C/-80°C. The shelf life of lyophilized form is 12 months at -20°C/-80°C.