



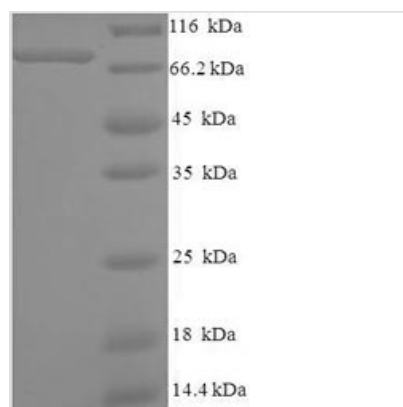
# Recombinant Human PC4 and SFRS1-interacting protein (PSIP1)

<b>Product Code</b>	CSB-EP018860HU
<b>Relevance</b>	Transcriptional coactivator involved in neuroepithelial st cell differentiation and neurogenesis. Involved in particular in lens epithelial cell gene regulation and stress responses. May play an important role in lens epithelial to fiber cell terminal differentiation. May play a protective role during stress-induced apoptosis. Isoform 2 is a more general and stronger transcriptional coactivator. Isoform 2 may also act as an adapter to coordinate pre-mRNA splicing. Cellular cofactor for lentiviral integration.
<b>Abbreviation</b>	Recombinant Human PSIP1 protein
<b>Storage</b>	The shelf life is related to many factors, storage state, buffer ingredients, storage temperature and the stability of the protein itself. Generally, the shelf life of liquid form is 6 months at -20°C/-80°C. The shelf life of lyophilized form is 12 months at -20°C/-80°C.
<b>Uniprot No.</b>	O75475
<b>Alias</b>	CLL-associated antigen KW-7Dense fine speckles 70 kDa protein ;DFS 70Lens epithelium-derived growth factorTranscriptional coactivator p75/p52
<b>Product Type</b>	Recombinant Protein
<b>Immunogen Species</b>	Homo sapiens (Human)
<b>Purity</b>	Greater than 90% as determined by SDS-PAGE.
<b>Sequence</b>	MTRDFKPGDLIFAKMKGYPHWPARVDEVPDGAVKPPTNKLPIFFFGTHETAFL GPKDIFPYSENKEKYGKPNKRKGFNEGLWEIDNNPKVKFSSQQAATKQSNAS SDVEVEEKETSVSKEDTDHEEKASNEDVTKAVIDITTPKAARRGRKRKAQVE TEEAGVVTTATASVNLKVSPKRGRPAATEVKIPKPRGRPKMVKQPCPSESDIIT EEDKSKKKGQEEKQPKKQPKKDEEGQKEEDKPRKEPDKKEGKKEVESKRKN LAKTGVSTSDSEEEGDDQEGEKKRKGGGRNFQTAHRRNMLKGQHEKEAADR KRKQEEQMETEQQNKDEGKKPEVKKVEKKRETSMD SRLQRIHAEIKNSLKIDN LDVNRCEALDELASLQVTMQQAQKHTMITTLKKIRRFKVSQVIMEKSTMLYN KFKNMFLVGEGDSVITQVLNKS LAEQRQHEEANKTKDQGKKGPNKKLEKEQT GSKTLNGGSDAQDGNQPQHNGESNEDSKDNHEASTKKKPSSEERETEISLKD STLDN
<b>Research Area</b>	Immunology
<b>Source</b>	E.coli
<b>Target Names</b>	PSIP1
<b>Expression Region</b>	1-530aa
<b>Notes</b>	Repeated freezing and thawing is not recommended. Store working aliquots at 4°C for up to one week.
<b>Tag Info</b>	N-terminal 6xHis-SUMO-tagged

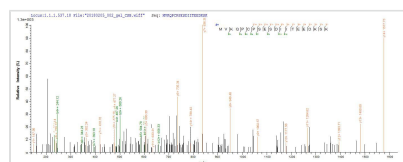
<b>Mol. Weight</b>	76.1kDa
--------------------	---------

Protein Length	Full Length
----------------	-------------

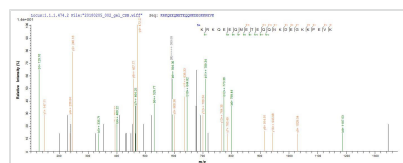
**Image**



(Tris-Glycine gel) Discontinuous SDS-PAGE (reduced) with 5% enrichment gel and 15% separation gel.



Based on the SEQUEST from database of E.coli host and target protein, the LC-MS/MS Analysis result of CSB-EP018860HU could indicate that this peptide derived from E.coli-expressed Homo sapiens (Human) PSIP1.



Based on the SEQUEST from database of E.coli host and target protein, the LC-MS/MS Analysis result of CSB-EP018860HU could indicate that this peptide derived from E.coli-expressed Homo sapiens (Human) PSIP1.

### Description

The Recombinant Human PSIP1 is a powerful research tool tailored for scientists investigating the PC4 and SFRS1-interacting protein. Also known as CLL-associated antigen KW-7, Dense fine speckles 70 kDa protein (DFS 70), Lens epithelium-derived growth factor, and Transcriptional coactivator p75/p52, this protein plays a significant role in various cellular processes, making it an essential component in the field of Immunology.

Our Recombinant Human PSIP1 is a full-length protein (1-530aa) expressed in *E. coli*, ensuring a consistent and reliable source for your research endeavors. The protein is N-terminal 6xHis-SUMO-tagged, facilitating purification and detection processes. With a purity greater than 90% as determined by SDS-PAGE, and available in both liquid and lyophilized powder forms, this high-quality recombinant protein offers the precision and performance necessary for your Immunology studies.

## Reconstitution

We recommend that this vial be briefly centrifuged prior to opening to bring the contents to the bottom. Please reconstitute protein in deionized sterile water to a concentration of 0.1-1.0 mg/mL. We recommend to add 5-50% of glycerol (final concentration) and aliquot for long-term storage at -20°C/-80°C. Our default final concentration of glycerol is 50%. Customers could use it as reference.

## Shelf Life

The shelf life is related to many factors, storage state, buffer ingredients,



storage temperature and the stability of the protein itself.

Generally, the shelf life of liquid form is 6 months at -20°C/-80°C. The shelf life of lyophilized form is 12 months at -20°C/-80°C.