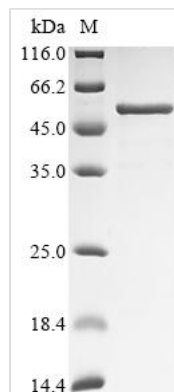




# Recombinant Human Pregnancy-specific beta-1-glycoprotein 1 (PSG1)

<b>Product Code</b>	CSB-EP018849HU
<b>Abbreviation</b>	Recombinant Human PSG1 protein
<b>Storage</b>	The shelf life is related to many factors, storage state, buffer ingredients, storage temperature and the stability of the protein itself. Generally, the shelf life of liquid form is 6 months at -20°C/-80°C. The shelf life of lyophilized form is 12 months at -20°C/-80°C.
<b>Uniprot No.</b>	P11464
<b>Form</b>	Liquid or Lyophilized powder
<b>Storage Buffer</b>	If the delivery form is liquid, the default storage buffer is Tris/PBS-based buffer, 5%-50% glycerol. If the delivery form is lyophilized powder, the buffer before lyophilization is Tris/PBS-based buffer, 6% Trehalose.
<b>Product Type</b>	Recombinant Human Pregnancy-specific beta-1-glycoprotein 1(PSG1)
<b>Immunogen Species</b>	Homo sapiens (Human)
<b>Purity</b>	Greater than 85% as determined by SDS-PAGE.
<b>Sequence</b>	QVTIEAEPTKVSEGKDVLLLVHNL PQNL TGYIWYKGM RDLYHYITSYVVDGEII IYGPAYSGRETAYSNASLLIQNV TREDA GSYTLHIIKGD DGT RGV TGRFTFTLHL ETPKPSISSSNLNPRETMEAVSLTCDPETPDASYLWWMNGQSLPMTHSLKLS ETNRTLFL LGVT KYTAGPYECEIRNPVSASRSDPVTLNLLPKLPKYITINNLNP RENKDV LNFTCEPKSENYTYIWWLNGQSLPVSPRVKRP IENRILILPSVTRNET GPYQCEIRD RYGGIRSDPVTLNVLYGPDLPRIYPSFTYYRSGEVLYLSCSADSN PPAQYSWTINEKFQLPGQKLFIRHITTKHSGLYVCSVRNSATGKESSKSMTVE VSDWTVP
<b>Research Area</b>	Tags & Cell Markers
<b>Source</b>	E.coli
<b>Target Names</b>	PSG1
<b>Expression Region</b>	35-419aa
<b>Notes</b>	Repeated freezing and thawing is not recommended. Store working aliquots at 4°C for up to one week.
<b>Tag Info</b>	N-terminal 6xHis-tagged
<b>Mol. Weight</b>	49.5 kDa
<b>Protein Length</b>	Full Length of Mature Protein
<b>Image</b>	



(Tris-Glycine gel) Discontinuous SDS-PAGE (reduced) with 5% enrichment gel and 15% separation gel.

## Description

The production of recombinant Human PSG1 protein involves manipulating the expression of the desired gene in e.coli cells. The sequence (35-419aa) of foreign DNA is merged with an expression vector and subsequently introduced into e.coli cells. Positive cells are chosen and cultivated to induce the expression of the desired protein. A N-terminal 6xHis tag is fused to the protein. The resulting recombinant Human PSG1 protein undergoes purification through affinity purification, with a purity exceeding 85%, as confirmed by SDS-PAGE.

## Reconstitution

We recommend that this vial be briefly centrifuged prior to opening to bring the contents to the bottom. Please reconstitute protein in deionized sterile water to a concentration of 0.1-1.0 mg/mL. We recommend to add 5-50% of glycerol (final concentration) and aliquot for long-term storage at -20°C/-80°C. Our default final concentration of glycerol is 50%. Customers could use it as reference.

## Shelf Life

The shelf life is related to many factors, storage state, buffer ingredients, storage temperature and the stability of the protein itself. Generally, the shelf life of liquid form is 6 months at -20°C/-80°C. The shelf life of lyophilized form is 12 months at -20°C/-80°C.