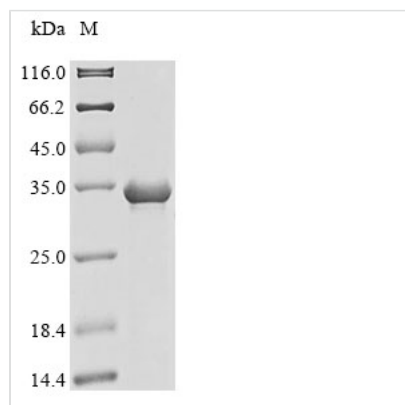




Recombinant Human Serine protease 1 (PRSS1)

Product Code	CSB-EP018811HU
Abbreviation	Recombinant Human PRSS1 protein
Storage	The shelf life is related to many factors, storage state, buffer ingredients, storage temperature and the stability of the protein itself. Generally, the shelf life of liquid form is 6 months at -20°C/-80°C. The shelf life of lyophilized form is 12 months at -20°C/-80°C.
Uniprot No.	P07477
Product Type	Recombinant Proteins
Immunogen Species	Homo sapiens (Human)
Purity	Greater than 85% as determined by SDS-PAGE.
Sequence	IVGGYNCEENSVPYQVSLNSGYHFCGGSLINEQWVVSAGHCYKSRIQVRLGE HNIEVLEGNEQFINAAKIIRHPQYDRKTLNNDIMLIKSSRAVINARVSTISLPTAP PATGTKCLISGWGNTASSGADYPDELQCLDAPVLSQAKCEASYPGKITSNMFC VGFLEGGKDSCQGDSSGPPVVCNGQLQGVVSWGDGCAQKNKPGVYTKVYNY VKWIKNTIAANS
Research Area	Metabolism
Source	E.coli
Target Names	PRSS1
Protein Names	Recommended name: Trypsin-1 EC= 3.4.21.4Alternative name(s): Beta-trypsin Cationic trypsinogen Serine protease 1 Trypsin ICleaved into the following 2 chains: 1. Alpha-trypsin chain 1 2. Alpha-trypsin chain 2
Expression Region	24-247aa
Notes	Repeated freezing and thawing is not recommended. Store working aliquots at 4°C for up to one week.
Tag Info	N-terminal 10xHis-tagged and C-terminal Myc-tagged
Mol. Weight	31.6 kDa
Protein Length	Full Length of Mature Protein

Image



(Tris-Glycine gel) Discontinuous SDS-PAGE (reduced) with 5% enrichment gel and 15% separation gel.



Shelf Life

The shelf life is related to many factors, storage state, buffer ingredients, storage temperature and the stability of the protein itself.

Generally, the shelf life of liquid form is 6 months at -20°C/-80°C. The shelf life of lyophilized form is 12 months at -20°C/-80°C.