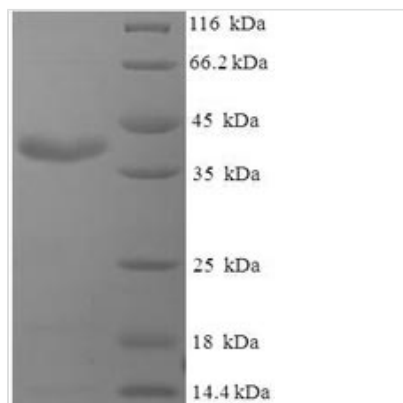




Recombinant Pig Prolactin (PRL)

Product Code	CSB-EP018724PI
Relevance	Prolactin acts primarily on the mammary gland by promoting lactation.
Abbreviation	Recombinant Pig PRL protein
Storage	The shelf life is related to many factors, storage state, buffer ingredients, storage temperature and the stability of the protein itself. Generally, the shelf life of liquid form is 6 months at -20°C/-80°C. The shelf life of lyophilized form is 12 months at -20°C/-80°C.
Uniprot No.	P01238
Product Type	Recombinant Protein
Immunogen Species	Sus scrofa (Pig)
Purity	Greater than 90% as determined by SDS-PAGE.
Sequence	LPICPSGAVNCQVSLRDLFDRAVILSHYIHNLSSEMFNEFDKRYAQGRGFITKAI NSCHTSSLSTPEDKEQAQQIHHEVLLNLILRVLRSWNDPLYHLVTEVRGMQEA PDAILSRAIEIEEQNKRLLEGMEKIVGQVHPGIKENEVYSVWSGLPSLQMADED TRLFAFYNNLLHCLRRDSHKIDNYLKKLCRIIYDSNC
Research Area	Others
Source	E.coli
Target Names	PRL
Expression Region	31-229aa
Notes	Repeated freezing and thawing is not recommended. Store working aliquots at 4°C for up to one week.
Tag Info	N-terminal 6xHis-SUMO-tagged
Mol. Weight	39.0kDa
Protein Length	Full Length of Mature Protein

Image



(Tris-Glycine gel) Discontinuous SDS-PAGE (reduced) with 5% enrichment gel and 15% separation gel.

Description

The synthesis of Recombinant Pig PRL protein began with the isolation of PRL



gene from the native genome. The next step was to amplify the PRL gene by inserting the PRL gene into an expression vector and then introducing the vector into the selected host cell, E.coli. Significant amounts of recombinant Pig PRL protein were produced by the host only when expression genes were added. For the purpose of protein purification, the vector contains N-terminal 6xHis-SUMO tag to the PRL DNA sequence. The purity of this protein is 90%+ determined by SDS-PAGE.

PRL is a gene encoding a protein named prolactin (PRL)(also known as lactotropin) in enabling mammals. The protein encoded by this gene can bind to prolactin receptor and has hormone activity s produced by the pituitary gland, a small gland at the base of the brain. It promotes lactation (breast milk production) in mammals and plays an essential role in metabolism, regulation of the immune system and pancreatic development.

Reconstitution

We recommend that this vial be briefly centrifuged prior to opening to bring the contents to the bottom. Please reconstitute protein in deionized sterile water to a concentration of 0.1-1.0 mg/mL. We recommend to add 5-50% of glycerol (final concentration) and aliquot for long-term storage at -20°C/-80°C. Our default final concentration of glycerol is 50%. Customers could use it as reference.

Shelf Life

The shelf life is related to many factors, storage state, buffer ingredients, storage temperature and the stability of the protein itself. Generally, the shelf life of liquid form is 6 months at -20°C/-80°C. The shelf life of lyophilized form is 12 months at -20°C/-80°C.