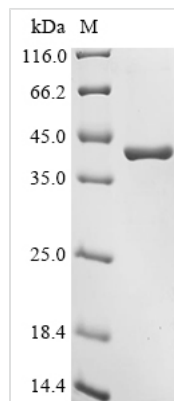




Recombinant Human Serine/threonine-protein phosphatase 2A catalytic subunit alpha isoform (PPP2CA)

Product Code	CSB-EP018559HU
Abbreviation	Recombinant Human PPP2CA protein
Storage	The shelf life is related to many factors, storage state, buffer ingredients, storage temperature and the stability of the protein itself. Generally, the shelf life of liquid form is 6 months at -20°C/-80°C. The shelf life of lyophilized form is 12 months at -20°C/-80°C.
Uniprot No.	P67775
Form	Liquid or Lyophilized powder
Storage Buffer	If the delivery form is liquid, the default storage buffer is Tris/PBS-based buffer, 5%-50% glycerol. If the delivery form is lyophilized powder, the buffer before lyophilization is Tris/PBS-based buffer, 6% Trehalose.
Product Type	Recombinant Protein
Immunogen Species	Homo sapiens (Human)
Purity	Greater than 90% as determined by SDS-PAGE.
Sequence	MDEKVFTKELDQWIEQLNECKQLSESQVKSLCEKAKEILTKESNVQEVRCPVT VCGDVHGGQFHDLMELFRIGGKSPDTNYLFMGDYVDRGYYSVETVTLLVALKV RYRERITILRGNHESRQITQVYGFYDECLRKYGNANVWKYFTDLFDYLPLTALV DGQIFCLHGGGLSPSIDTLDHIRALDRLQVEVPHEGPMCDLLWSDPDDRGGWGIS PRGAGYTFGQDISETFNHANGTLVSRAHQLVMEGYNWCHDRNVVTIFSAPN YCYRCGNQAAIMELDDTLKYSFLQFDPAPRRGEPHVTRRTPDYFL
Research Area	Cancer
Source	E.coli
Target Names	PPP2CA
Expression Region	1-309aa
Notes	Repeated freezing and thawing is not recommended. Store working aliquots at 4°C for up to one week.
Tag Info	N-terminal 10xHis-tagged and C-terminal Myc-tagged
Mol. Weight	43.0 kDa
Protein Length	Full Length
Image	



(Tris-Glycine gel) Discontinuous SDS-PAGE (reduced) with 5% enrichment gel and 15% separation gel.

Description

In the production of a recombinant human serine/threonine-protein phosphatase 2A catalytic subunit alpha isoform (PPP2CA), a robust *E. coli* expression system is utilized. The process involves cloning the gene fragment encoding the full-length human PPP2CA protein (1-309aa) into a specially designed expression vector. This vector incorporates an N-terminal 10xHis-tag and a C-terminal Myc-tag, enabling efficient purification and detection of the recombinant protein. The engineered vector is then introduced into *E. coli* cells through a transformation process and positive transformants are selected. Subsequently, a large-scale culture of the transformed *E. coli* cells is established, providing optimal conditions for protein expression. The expressed recombinant PPP2CA protein is harvested from the cells and subjected to purification to obtain a high level of purity. SDS-PAGE analysis confirms the purity of the protein, which exceeds 90%. On the gel, the recombinant Gpi protein appears as a distinct band with an estimated molecular weight of approximately 43 kDa.

Reconstitution

We recommend that this vial be briefly centrifuged prior to opening to bring the contents to the bottom. Please reconstitute protein in deionized sterile water to a concentration of 0.1-1.0 mg/mL. We recommend to add 5-50% of glycerol (final concentration) and aliquot for long-term storage at -20°C/-80°C. Our default final concentration of glycerol is 50%. Customers could use it as reference.

Shelf Life

The shelf life is related to many factors, storage state, buffer ingredients, storage temperature and the stability of the protein itself. Generally, the shelf life of liquid form is 6 months at -20°C/-80°C. The shelf life of lyophilized form is 12 months at -20°C/-80°C.