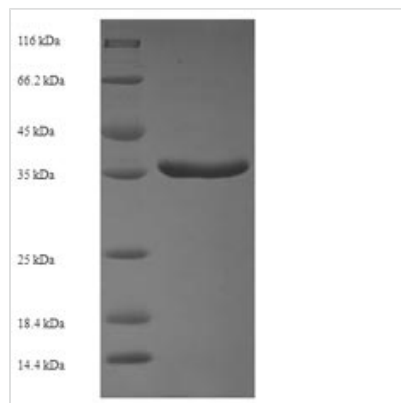




Recombinant Human Protein phosphatase 1B (PPM1B)

Product Code	CSB-EP018490HU
Relevance	Enzyme with a broad specificity. Dephosphorylates CDK2 and CDK6 in vitro. Dephosphorylates PRKAA1 and PRKAA2. Inhibits TBK1-mediated antiviral signaling by dephosphorylating it at 'Ser-172'. Plays an important role in the termination of TNF-alpha-mediated NF-kappa-B activation through dephosphorylating and inactivating IKBKB/IKKB.
Abbreviation	Recombinant Human PPM1B protein
Storage	The shelf life is related to many factors, storage state, buffer ingredients, storage temperature and the stability of the protein itself. Generally, the shelf life of liquid form is 6 months at -20°C/-80°C. The shelf life of lyophilized form is 12 months at -20°C/-80°C.
Uniprot No.	O75688
Product Type	Recombinant Proteins
Immunogen Species	Homo sapiens (Human)
Purity	Greater than 90% as determined by SDS-PAGE.
Sequence	MSIVLVCFSNAPKVSDEAVKKDSELDKHLESRVEEIMEKSGEEGMPDLAHVMR ILSAENIPNLPPGGGLAGKRNVEAVYSRLNPHRES DGASDEAEESGSQGKLV EALRQMRINHRGN YRQLLEEMLT SYRLAKVEGEESPAEPAATATSSNSDAGN PVTMQESHTES E SGLAELDSSNEDAGTKMSGEKI
Research Area	Signal Transduction
Source	E.coli
Target Names	PPM1B
Protein Names	Recommended name: Protein phosphatase 1B EC= 3.1.3.16Alternative name(s): Protein phosphatase 2C isoform beta Short name= PP2C-beta
Expression Region	1-192aa
Notes	Repeated freezing and thawing is not recommended. Store working aliquots at 4°C for up to one week.
Tag Info	N-terminal 6xHis-SUMO-tagged
Mol. Weight	36.6kDa
Protein Length	Full Length of Isoform Beta-X
Image	



(Tris-Glycine gel) Discontinuous SDS-PAGE (reduced) with 5% enrichment gel and 15% separation gel.

Shelf Life

The shelf life is related to many factors, storage state, buffer ingredients, storage temperature and the stability of the protein itself. Generally, the shelf life of liquid form is 6 months at -20°C/-80°C. The shelf life of lyophilized form is 12 months at -20°C/-80°C.