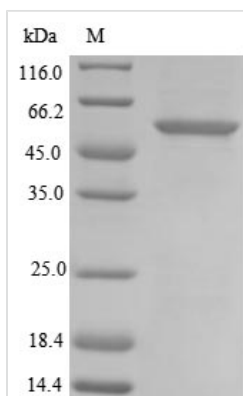




# Recombinant Dog Inactive pancreatic lipase-related protein 1 (PNLIPRP1)

<b>Product Code</b>	CSB-EP018263DOa0
<b>Relevance</b>	May function as inhibitor of dietary triglyceride digestion. Lacks detectable lipase activity towards triglycerides, diglycerides, phosphatidylcholine, galactolipids or cholesterol esters (in vitro).
<b>Abbreviation</b>	Recombinant Dog PNLIPRP1 protein
<b>Storage</b>	The shelf life is related to many factors, storage state, buffer ingredients, storage temperature and the stability of the protein itself. Generally, the shelf life of liquid form is 6 months at -20°C/-80°C. The shelf life of lyophilized form is 12 months at -20°C/-80°C.
<b>Uniprot No.</b>	P06857
<b>Product Type</b>	Recombinant Protein
<b>Immunogen Species</b>	Canis lupus familiaris (Dog) (Canis familiaris)
<b>Purity</b>	Greater than 85% as determined by SDS-PAGE.
<b>Sequence</b>	KEVCYEQIGCFSDAEPWAGTAIRPLKVLPWSPERIGTRFLLYTNKNPNNFQTLL PSDPSTIEASNFTQDKKTRFIIHGFIDKGEENWLLDMCKNMFKVEEVNCICVDW KKGSQTSYTTQAANNVRVVGAAQVAQMLSMLSANYSYSPSQVQLIGHSLGAHVA GEAGSRTPGLGRITGLDPVEASFQGTPEEVRLDPTDADFVDVIHTDAAPLIPFL GFGTSQQMGHLDFFPNGGEEMPGCKKNALSQIVDLDDGIWEGTRDFVACNHL RSYKYYSESILNPDGFASYPCASYRAFESNKCFCPCPDQGCPQMGHYADKFAV KTSDETQKYFLNTGDSSNFARWRYGVISITLSGKRATGQAKVALFGSKGNTHQ FNIFKGILKPGSTHSNEFDAKLDVGTIEKVKFLWNNNVVNPTFPKVGAAKITVQ KGEEKTVHSFCSESTVREDVLLTLTPC
<b>Research Area</b>	Signal Transduction
<b>Source</b>	E.coli
<b>Target Names</b>	PNLIPRP1
<b>Protein Names</b>	Short name:PL-RP1
<b>Expression Region</b>	18-467aa
<b>Notes</b>	Repeated freezing and thawing is not recommended. Store working aliquots at 4°C for up to one week.
<b>Tag Info</b>	N-terminal 6xHis-tagged
<b>Mol. Weight</b>	55.2 kDa
<b>Protein Length</b>	Full Length of Mature Protein
<b>Image</b>	



(Tris-Glycine gel) Discontinuous SDS-PAGE (reduced) with 5% enrichment gel and 15% separation gel.

### Reconstitution

We recommend that this vial be briefly centrifuged prior to opening to bring the contents to the bottom. Please reconstitute protein in deionized sterile water to a concentration of 0.1-1.0 mg/mL. We recommend to add 5-50% of glycerol (final concentration) and aliquot for long-term storage at -20°C/-80°C. Our default final concentration of glycerol is 50%. Customers could use it as reference.

### Shelf Life

The shelf life is related to many factors, storage state, buffer ingredients, storage temperature and the stability of the protein itself. Generally, the shelf life of liquid form is 6 months at -20°C/-80°C. The shelf life of lyophilized form is 12 months at -20°C/-80°C.