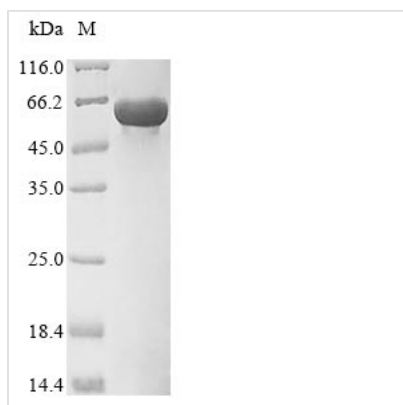


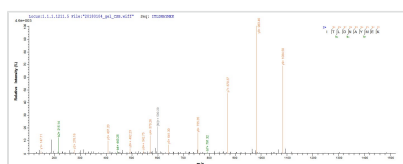


# Recombinant Mouse Pyruvate kinase PKM (Pkm)

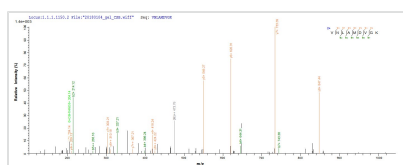
<b>Product Code</b>	CSB-EP018072MO
<b>Relevance</b>	Glycolytic enzyme that catalyzes the transfer of a phosphoryl group from phosphoenolpyruvate (PEP) to ADP, generating ATP. Stimulates POU5F1-mediated transcriptional activation
<b>Abbreviation</b>	Recombinant Mouse Pkm protein
<b>Storage</b>	The shelf life is related to many factors, storage state, buffer ingredients, storage temperature and the stability of the protein itself. Generally, the shelf life of liquid form is 6 months at -20°C/-80°C. The shelf life of lyophilized form is 12 months at -20°C/-80°C.
<b>Uniprot No.</b>	P52480
<b>Product Type</b>	Recombinant Protein
<b>Immunogen Species</b>	Mus musculus (Mouse)
<b>Purity</b>	Greater than 85% as determined by SDS-PAGE.
<b>Sequence</b>	MPKPHSEAGTAFIQTQQLHAAMADTFLEHMCRLDIDSAPITARNTGIICTIGPAS RSVEMLKEMIKSGMNVARLNFSHGTHEYHAETIKNVREATESFASDPILYRPVA VALDTKGPEIRTGLIKGSGTAEVELKKGATLKITLDNAYMEKCDENILWLDYKNI CKVVEVGSKIYVDDGLISLQVKEKGADFLVTEVENGGSLGSKKGVNLPGAADV LPAVSEKDIQDLKFGVEQDQDMVFASFIRKAADVHEVRKVLGEKGKNIKISKIE NHEGVRRFDEILEASDGIMVARGDLGIEIPAEEKVFLAQKMMIGRCNRAGKPVIC ATQMLESMIKKPRPTRAEAGSDVANAVLDGADCIMLSGETAKGDYPLEAVRMQ HLIAREAEAAIYHLQLFEELRRLAPITSDPTEAAAVGAVEASFKCCSGAIIVLTGS GRSAHQVARYRPRAPIIAVTRNPQTARQAHLYRGIFPVLCKDAVLNAWAEDVD LRVNLAMDVGKARGFFKKGDVVIVLTGWRPGSGFTNTMRVVPVP
<b>Research Area</b>	Signal Transduction
<b>Source</b>	E.coli
<b>Target Names</b>	Pkm
<b>Protein Names</b>	Pyruvate kinase muscle isozyme Pk3,Pkm2, Pykm
<b>Expression Region</b>	1-531aa
<b>Notes</b>	Repeated freezing and thawing is not recommended. Store working aliquots at 4°C for up to one week.
<b>Tag Info</b>	N-terminal 10xHis-tagged and C-terminal Myc-tagged
<b>Mol. Weight</b>	62.8 kDa
<b>Protein Length</b>	Full Length
<b>Image</b>	



(Tris-Glycine gel) Discontinuous SDS-PAGE (reduced) with 5% enrichment gel and 15% separation gel.



Based on the SEQUEST from database of E.coli host and target protein, the LC-MS/MS Analysis result of CSB-EP018072MO could indicate that this peptide derived from E.coli-expressed Mus musculus (Mouse) Pkm.



Based on the SEQUEST from database of E.coli host and target protein, the LC-MS/MS Analysis result of CSB-EP018072MO could indicate that this peptide derived from E.coli-expressed Mus musculus (Mouse) Pkm.

## Reconstitution

We recommend that this vial be briefly centrifuged prior to opening to bring the contents to the bottom. Please reconstitute protein in deionized sterile water to a concentration of 0.1-1.0 mg/mL. We recommend to add 5-50% of glycerol (final concentration) and aliquot for long-term storage at -20°C/-80°C. Our default final concentration of glycerol is 50%. Customers could use it as reference.

## Shelf Life

The shelf life is related to many factors, storage state, buffer ingredients, storage temperature and the stability of the protein itself. Generally, the shelf life of liquid form is 6 months at -20°C/-80°C. The shelf life of lyophilized form is 12 months at -20°C/-80°C.