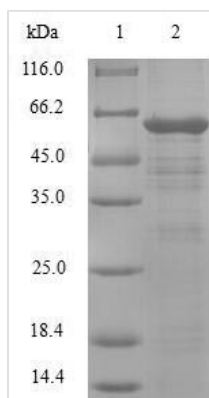




Recombinant Human PDZ and LIM domain protein 1 (PDLIM1)

Product Code	CSB-EP017731HU
Relevance	Cytoskeletal protein that may act as an adapter that brings other proteins (like kinases) to the cytoskeleton.
Abbreviation	Recombinant Human PDLIM1 protein
Storage	The shelf life is related to many factors, storage state, buffer ingredients, storage temperature and the stability of the protein itself. Generally, the shelf life of liquid form is 6 months at -20°C/-80°C. The shelf life of lyophilized form is 12 months at -20°C/-80°C.
Uniprot No.	O00151
Alias	C-terminal LIM domain protein 1 Elfin LIM domain protein CLP-36
Product Type	Recombinant Protein
Immunogen Species	Homo sapiens (Human)
Purity	Greater than 90% as determined by SDS-PAGE.
Sequence	MTTQQIDLQGGPGPWGFRVLVGGKDFEQPLAISRVTPGSKAALANLCIGDVITAID GENTSNMTHLEAQNRIKGCTDNLTLTVARSEHKVWSPLVTEEGKRHPYKMNL ASEPQEVLHIGSAHNRSAMPFTASPASSTTARVITNQYNNPAGLYSSENISNFN NALESKTAASGVEANSRPLDHAQPPSSLVIDKESEVYKMLQEKQELNEPPKQS TSFLVLQEILESEEKGDPNKPSGFRSVKAPVTKVAASIGNAQKLPMCDKCGTGI VGVFVKLRDRHRHPECYVCTDCGTNLKQKGHFFVEDQIYCEKHARERVTPPE GYEVVTVFPK
Research Area	Epigenetics and Nuclear Signaling
Source	E.coli
Target Names	PDLIM1
Protein Names	Recommended name: PDZ and LIM domain protein 1Alternative name(s): C-terminal LIM domain protein 1 Elfin LIM domain protein CLP-36
Expression Region	1-329aa
Notes	Repeated freezing and thawing is not recommended. Store working aliquots at 4°C for up to one week.
Tag Info	N-terminal GST-tagged
Mol. Weight	62.9kDa
Protein Length	Full Length
Image	



(Tris-Glycine gel) Discontinuous SDS-PAGE (reduced) with 5% enrichment gel and 15% separation gel.

Reconstitution

We recommend that this vial be briefly centrifuged prior to opening to bring the contents to the bottom. Please reconstitute protein in deionized sterile water to a concentration of 0.1-1.0 mg/mL. We recommend to add 5-50% of glycerol (final concentration) and aliquot for long-term storage at -20°C/-80°C. Our default final concentration of glycerol is 50%. Customers could use it as reference.

Shelf Life

The shelf life is related to many factors, storage state, buffer ingredients, storage temperature and the stability of the protein itself. Generally, the shelf life of liquid form is 6 months at -20°C/-80°C. The shelf life of lyophilized form is 12 months at -20°C/-80°C.