



# Recombinant Rat Neuroendocrine convertase 2 (Pcsk2)

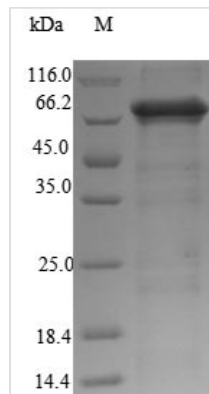
<b>Product Code</b>	CSB-EP017642RA
<b>Relevance</b>	Involved in the processing of hormone and other protein precursors at sites comprised of pairs of basic amino acid residues. Responsible for the release of glucagon from proglucagon in pancreatic A cells (By similarity).
<b>Abbreviation</b>	Recombinant Rat Pcsk2 protein
<b>Storage</b>	The shelf life is related to many factors, storage state, buffer ingredients, storage temperature and the stability of the protein itself. Generally, the shelf life of liquid form is 6 months at -20°C/-80°C. The shelf life of lyophilized form is 12 months at -20°C/-80°C.
<b>Uniprot No.</b>	P28841
<b>Alias</b>	NEC 2 Alternative name(s): KEX2-like endoprotease 2 Prohormone convertase 2 Proprotein convertase 2 Short name: PC2
<b>Product Type</b>	Recombinant Protein
<b>Immunogen Species</b>	Rattus norvegicus (Rat)
<b>Purity</b>	Greater than 90% as determined by SDS-PAGE.
<b>Sequence</b>	GYRDINEIDINMNDPLFTKQWYLFNTGQADGTPGLDLNVAEAWELGYTGKGV TIGIMDDGIDYLHPDLAYNYNSDASYDFSSNDPYPYPRYTDDWFNSHGTRCAG EVSAAASNNICGVGVAYNSKVAGIRMLDQPFMTDIEASSISHMPQLIDIYSASW GPTDNGKTVDPRELTLQAMADGVNKGRRGGKSIYVWASGDGGSYDDCNC DGYASSMWTISINSAINDGRTALYDESCSSTLASTFSNGRKRNP EAGVATTDL YGNCTLRHSGTSAAAP EAGVFALALEANVDLTWRDMQHLTVLTSKRNLHD EVHQWRRNGVGLFNHLFGYGVLDAGAMVKMAKDWKTVPERFHCVGGSVQ NPEKIPPTGKLVLTQTNACEGKENFVRYLEHVQAVITVNATRRGDLNINMTSP MGTKSILLSRRPRDDDSKVGFDKWPFTTHTWGEDARGTWLELGFVGSAP QKGLLKEWTLMLHGTQSAPYIDQVVRDYQSKLAMSKKQEEEEELDEAVERS LSILRKN
<b>Research Area</b>	Signal Transduction
<b>Source</b>	E.coli
<b>Target Names</b>	Pcsk2
<b>Protein Names</b>	Recommended name: Neuroendocrine convertase 2 Short name= NEC 2 EC= 3.4.21.94 Alternative name(s): KEX2-like endoprotease 2 Prohormone convertase 2 Proprotein convertase 2 Short name= PC2
<b>Expression Region</b>	109-637aa
<b>Notes</b>	Repeated freezing and thawing is not recommended. Store working aliquots at 4°C for up to one week.
<b>Tag Info</b>	N-terminal 6xHis-tagged



**Mol. Weight** 62.3kDa

**Protein Length** Full Length of Mature Protein

**Image**



(Tris-Glycine gel) Discontinuous SDS-PAGE (reduced) with 5% enrichment gel and 15% separation gel.

**Reconstitution**

We recommend that this vial be briefly centrifuged prior to opening to bring the contents to the bottom. Please reconstitute protein in deionized sterile water to a concentration of 0.1-1.0 mg/mL. We recommend to add 5-50% of glycerol (final concentration) and aliquot for long-term storage at -20°C/-80°C. Our default final concentration of glycerol is 50%. Customers could use it as reference.

**Shelf Life**

The shelf life is related to many factors, storage state, buffer ingredients, storage temperature and the stability of the protein itself. Generally, the shelf life of liquid form is 6 months at -20°C/-80°C. The shelf life of lyophilized form is 12 months at -20°C/-80°C.