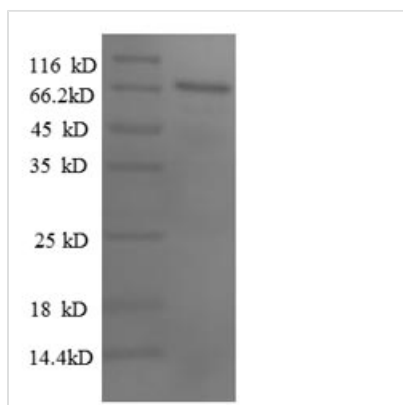




# Recombinant Human Paired box protein Pax-2 (PAX2), partial

<b>Product Code</b>	CSB-EP017488HU1
<b>Relevance</b>	Transcription factor that may have a role in kidney cell differentiation . Has a critical role in the development of the urogenital tract, the eyes, and the CNS.
<b>Abbreviation</b>	Recombinant Human PAX2 protein, partial
<b>Storage</b>	The shelf life is related to many factors, storage state, buffer ingredients, storage temperature and the stability of the protein itself. Generally, the shelf life of liquid form is 6 months at -20°C/-80°C. The shelf life of lyophilized form is 12 months at -20°C/-80°C.
<b>Uniprot No.</b>	Q02962
<b>Product Type</b>	Recombinant Proteins
<b>Immunogen Species</b>	Homo sapiens (Human)
<b>Purity</b>	Greater than 90% as determined by SDS-PAGE.
<b>Sequence</b>	MDMHCKADPFSAMHPGHGGVNLGGVFNNGRPLPDVVRQRIVELAHQGVPR CDISRQLRVSHGCVSKILGRYYETGSIKPGVIGGSKPKVATPKVVDKIAEYKRQ NPTMFAWEIRDRLAEGICDNDTVPSVSSINRIIRTKVQQPFHPTPDGAGTGVT APGHTIVPSTASPPVSSASNDPVGSYSINGILGIPRSNGEKRKREDEDVSEGSVP NGDSQSGVDSLRLKHLRADTFTQQQLEALDRVFERPSYPDVVFQASEHIKSEQG NEYSLPALTPGLDEVKSSLSASTNPELGSNVSGTQTYPVVTGRDMASTTLPGY PPHPPTGQGSYPTSTLAGMVPEAAVGPSSSLMSKPGRKLAEVPPCVQPTGA SSPATRTATPSTRPTTRL
<b>Research Area</b>	Developmental Biology
<b>Source</b>	E.coli
<b>Target Names</b>	PAX2
<b>Expression Region</b>	1-388aa
<b>Notes</b>	Repeated freezing and thawing is not recommended. Store working aliquots at 4°C for up to one week.
<b>Tag Info</b>	N-terminal GST-tagged
<b>Mol. Weight</b>	68.2kDa
<b>Protein Length</b>	partial of Isoform 4
<b>Image</b>	



(Tris-Glycine gel) Discontinuous SDS-PAGE (reduced) with 5% enrichment gel and 15% separation gel.

## Shelf Life

The shelf life is related to many factors, storage state, buffer ingredients, storage temperature and the stability of the protein itself. Generally, the shelf life of liquid form is 6 months at -20°C/-80°C. The shelf life of lyophilized form is 12 months at -20°C/-80°C.