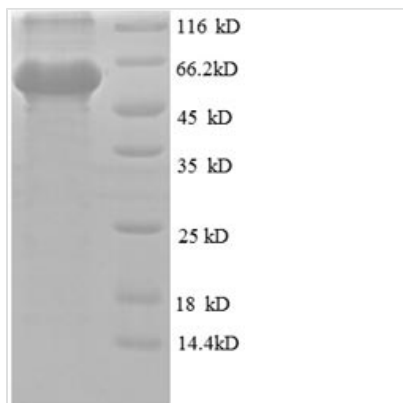




Recombinant Human Obg-like ATPase 1 (OLA1)

Product Code	CSB-EP016318HU
Relevance	Hydrolyzes ATP, and can also hydrolyze GTP with lower efficiency. Has lower affinity for GTP.
Abbreviation	Recombinant Human OLA1 protein
Storage	The shelf life is related to many factors, storage state, buffer ingredients, storage temperature and the stability of the protein itself. Generally, the shelf life of liquid form is 6 months at -20°C/-80°C. The shelf life of lyophilized form is 12 months at -20°C/-80°C.
Uniprot No.	Q9NTK5
Alias	DNA damage-regulated overexpressed in cancer 45 ;DOC45GTP-binding protein 9
Product Type	Recombinant Protein
Immunogen Species	Homo sapiens (Human)
Purity	Greater than 90% as determined by SDS-PAGE.
Sequence	MPPKKGGDGIKPPPIIGRFGTSLKIGIVGLPNVGKSTFFNVLTNSQASAENFPFC TIDPNESRVPVPDERFDFLCQYHKPASKIPAFLNVVDIAGLVKGAHNGQGLGN AFLSHISACDGIFHLTRAFEDDDITHVEGSVDPIRDIEIIHEELQLKDEEMIGPIIDK LEKVAVRGGDKKLKPEYDIMCKVKSWVIDQKKPVRFYHDWNDKEIEVLNKHLE LTSKPMVYLVNLSEKDYIRKKNKWLIIKEWVDKYDPGALVIPFSGALELKLQEL SAEERQKYLEANMTQSALPKIIKAGFAALQLEYFFTAGPDEVRAWTIRKGTKAP QAAGKIHTDFEKGFIKMAEVMKYEDFKKEEGSENAVKAAGKYRQQGRNYIVEDG DIIFFKFNTPPQPKKK
Research Area	Signal Transduction
Source	E.coli
Target Names	OLA1
Expression Region	1-396aa
Notes	Repeated freezing and thawing is not recommended. Store working aliquots at 4°C for up to one week.
Tag Info	N-terminal 6xHis-SUMO-tagged
Mol. Weight	60.7kDa
Protein Length	Full Length
Image	



(Tris-Glycine gel) Discontinuous SDS-PAGE (reduced) with 5% enrichment gel and 15% separation gel.

Reconstitution

We recommend that this vial be briefly centrifuged prior to opening to bring the contents to the bottom. Please reconstitute protein in deionized sterile water to a concentration of 0.1-1.0 mg/mL. We recommend to add 5-50% of glycerol (final concentration) and aliquot for long-term storage at -20°C/-80°C. Our default final concentration of glycerol is 50%. Customers could use it as reference.

Shelf Life

The shelf life is related to many factors, storage state, buffer ingredients, storage temperature and the stability of the protein itself. Generally, the shelf life of liquid form is 6 months at -20°C/-80°C. The shelf life of lyophilized form is 12 months at -20°C/-80°C.