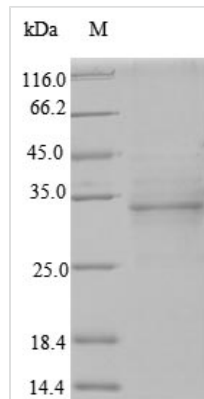




Recombinant Human Odontogenic ameloblast-associated protein (ODAM)

Product Code	CSB-EP016268HU
Relevance	Tooth-associated epithelia protein that probably plays a role in odontogenesis, the complex process that results in the initiation and generation of the tooth. May be incorporated in the enamel matrix at the end of mineralization process. Involved in the induction of RHOA activity via interaction with ARHGEF and expression of downstream factors such as ROCK. Plays a role in attachment of the junctional epithelium to the tooth surface.
Abbreviation	Recombinant Human ODAM protein
Storage	The shelf life is related to many factors, storage state, buffer ingredients, storage temperature and the stability of the protein itself. Generally, the shelf life of liquid form is 6 months at -20°C/-80°C. The shelf life of lyophilized form is 12 months at -20°C/-80°C.
Uniprot No.	A1E959
Alias	Apin
Product Type	Recombinant Protein
Immunogen Species	Homo sapiens (Human)
Purity	Greater than 90% as determined by SDS-PAGE.
Sequence	APLIPQRLMSASNSNELLLNLNNGQLLPLQLQGPLNSWIPPFSGILQQQQQAQI PGLSQFSLSALDQFAGLLPNQIPLTGEASFAQGAQAGQVDPLQLQTPPQTQP GPSHVMPYVFSFKMPQEQQQMFQYYPVYMLPWEQPQQTVPRSPQQTRQQ QYEEQIPFYAQFGYIPQLAEPASGGQQQLAFDPQLGTAPEIAVMSTGEEIPYL QKEAINFRHDSAGVFMPSTSPKPSTTNVFTSAVDQTITPELPEEKDKTDSLREP
Research Area	Signal Transduction
Source	E.coli
Target Names	ODAM
Protein Names	Recommended name: Odontogenic ameloblast-associated protein Alternative name(s): Apin
Expression Region	16-279aa
Notes	Repeated freezing and thawing is not recommended. Store working aliquots at 4°C for up to one week.
Tag Info	N-terminal 6xHis-tagged
Mol. Weight	33.2kDa
Protein Length	Full Length of Mature Protein
Image	



(Tris-Glycine gel) Discontinuous SDS-PAGE (reduced) with 5% enrichment gel and 15% separation gel.

Description

Recombinant Human Odontogenic ameloblast-associated protein (ODAM) is a partial length protein expressed with an N-terminal 6xHis-tag in the E.coli. Its expression region corresponds to 16-279aa of human ODA protein. Its purity was determined by SDS-PAGE and reached up to 90% and presented the mass molecule around 35 kDa was visualized on the gel. This recombinant ODA protein may be used to synthesize antibodies against ODA or on the studies of ODA-associated signal transduction. ODA proteins in-stock are available. ODA is tooth-associated epithelia protein that probably plays a role in odontogenesis, the complex process is the cause of the initiation and generation of the tooth. This protein plays a role in attachment of the junctional epithelium to the tooth surface. Diseases associated with ODA include Dental Fluorosis and Bone Benign Neoplasm.

Reconstitution

We recommend that this vial be briefly centrifuged prior to opening to bring the contents to the bottom. Please reconstitute protein in deionized sterile water to a concentration of 0.1-1.0 mg/mL. We recommend to add 5-50% of glycerol (final concentration) and aliquot for long-term storage at -20°C/-80°C. Our default final concentration of glycerol is 50%. Customers could use it as reference.

Shelf Life

The shelf life is related to many factors, storage state, buffer ingredients, storage temperature and the stability of the protein itself. Generally, the shelf life of liquid form is 6 months at -20°C/-80°C. The shelf life of lyophilized form is 12 months at -20°C/-80°C.