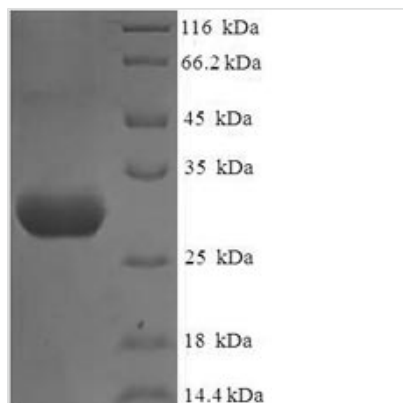




Recombinant Human Nephrin (NPHS1), partial

Product Code	CSB-EP015988HU
Relevance	Ses to play a role in the development or function of the kidney glomerular filtration barrier. Regulates glomerular vascular permeability. May anchor the podocyte slit diaphragm to the actin cytoskeleton. Plays a role in skeletal muscle formation through regulation of myoblast fusion .
Abbreviation	Recombinant Human NPHS1 protein, partial
Storage	The shelf life is related to many factors, storage state, buffer ingredients, storage temperature and the stability of the protein itself. Generally, the shelf life of liquid form is 6 months at -20°C/-80°C. The shelf life of lyophilized form is 12 months at -20°C/-80°C.
Uniprot No.	O60500
Alias	Renal glomerulus-specific cell adhesion receptor
Product Type	Recombinant Protein
Immunogen Species	Homo sapiens (Human)
Purity	Greater than 90% as determined by SDS-PAGE.
Sequence	QLAIPASVPRGFWALPENLTVVEGASVELRCGVSTPGSAVQWAKDGLLLGPD PRIPGFPRYRLEGDPARGEFHLHIEACDLSDDAEYECQVGRSEMGPELVSPR VILSILVPPKLLLLTPEAGTMVTWVAGQEYVNVNCVSGDAKPAPDITILLSGQTIS DISANVNEGSQQKLFTVEATARVTPRSSDNRQLLVCEASSPALEAPIKASFTVN VLFPFGPPVIEWPGLDEGHVRA
Research Area	Cell Adhesion
Source	E.coli
Target Names	NPHS1
Expression Region	23-257aa
Notes	Repeated freezing and thawing is not recommended. Store working aliquots at 4°C for up to one week.
Tag Info	N-terminal 6xHis-tagged
Mol. Weight	29.1kDa
Protein Length	Partial
Image	



(Tris-Glycine gel) Discontinuous SDS-PAGE (reduced) with 5% enrichment gel and 15% separation gel.

Description

CUSABIO team inserts the gene coding for the Human NPHS1 protein (23-257aa) into a plasmid vector to form recombinant plasmid, which is then introduced into e.coli cells. e.coli cells demonstrating successful uptake of the recombinant plasmid are selected based on their ability to survive in the presence of a specific antibiotic. The positive e.coli cells are cultured under conditions that promote the expression of the gene of interest. A N-terminal 6xHis tag is linked to the protein. Following expression, affinity purification is used to isolate and purify the recombinant Human NPHS1 protein from the cell lysate. Denaturing SDS-PAGE is then applied to resolve the resulting recombinant Human NPHS1 protein, demonstrating a purity greater than 90%.

Reconstitution

We recommend that this vial be briefly centrifuged prior to opening to bring the contents to the bottom. Please reconstitute protein in deionized sterile water to a concentration of 0.1-1.0 mg/mL. We recommend to add 5-50% of glycerol (final concentration) and aliquot for long-term storage at -20°C/-80°C. Our default final concentration of glycerol is 50%. Customers could use it as reference.

Shelf Life

The shelf life is related to many factors, storage state, buffer ingredients, storage temperature and the stability of the protein itself. Generally, the shelf life of liquid form is 6 months at -20°C/-80°C. The shelf life of lyophilized form is 12 months at -20°C/-80°C.