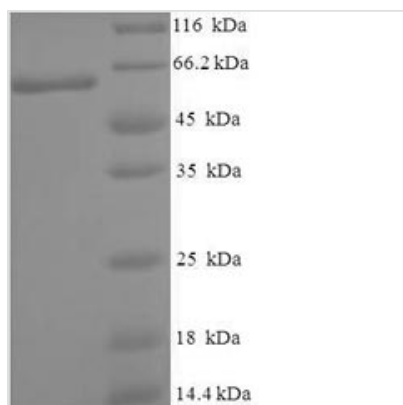




Recombinant Human Cytoplasmic domain protein NCK2 (NCK2)

Product Code	CSB-EP015531HU
Relevance	Adapter protein which associates with tyrosine-phosphorylated growth factor receptors or their cellular substrates. Maintains low levels of EIF2S1 phosphorylation by promoting its dephosphorylation by PP1. Plays a role in ELK1-dependent transcriptional activation in response to activated Ras signaling.
Abbreviation	Recombinant Human NCK2 protein
Storage	The shelf life is related to many factors, storage state, buffer ingredients, storage temperature and the stability of the protein itself. Generally, the shelf life of liquid form is 6 months at -20°C/-80°C. The shelf life of lyophilized form is 12 months at -20°C/-80°C.
Uniprot No.	O43639
Alias	Growth factor receptor-bound protein 4NCK adaptor protein 2 ;Nck-2SH2/SH3 adaptor protein NCK-beta
Product Type	Recombinant Protein
Immunogen Species	Homo sapiens (Human)
Purity	Greater than 90% as determined by SDS-PAGE.
Sequence	MTEEVIVIAKWDYTAQQDQELDIKKNERLWLLDDSKTWWRVRNAANRTGYVP SNYVERKNSLKKGSLVKNLKD TLGLGKTRRKTSARDASPTPSTDAEYPANGS GADRIYDLNIPAFVKFAYVAEREDEL SLVKGSRVTVMEKCSDGWWRGSYNGQ IGWFPSNYVLEEVDAAAESPSFLSLRK GASLSNGQGSRLHV VQTLYPFSSV TEEELNFEKGETMEVIEKPENDPEWWKCKNARGQVGLVPKNYVVVLS DGPAL HPAHAPQISYTG PSSSGRFAGREWYYGNVTRHQAECALNERGVEGD FLIRDS ESSPSDFS VSLKASGKNKHFKVQLVDNVYCIGQRRFHTMDELVEHYKKAPIFT SEHGEKLYLV RALQ
Research Area	Transcription
Source	E.coli
Target Names	NCK2
Expression Region	1-380aa
Notes	Repeated freezing and thawing is not recommended. Store working aliquots at 4°C for up to one week.
Tag Info	N-terminal 6xHis-SUMO-tagged
Mol. Weight	58.9kDa
Protein Length	Full Length
Image	



(Tris-Glycine gel) Discontinuous SDS-PAGE (reduced) with 5% enrichment gel and 15% separation gel.

Reconstitution

We recommend that this vial be briefly centrifuged prior to opening to bring the contents to the bottom. Please reconstitute protein in deionized sterile water to a concentration of 0.1-1.0 mg/mL. We recommend to add 5-50% of glycerol (final concentration) and aliquot for long-term storage at -20°C/-80°C. Our default final concentration of glycerol is 50%. Customers could use it as reference.

Shelf Life

The shelf life is related to many factors, storage state, buffer ingredients, storage temperature and the stability of the protein itself. Generally, the shelf life of liquid form is 6 months at -20°C/-80°C. The shelf life of lyophilized form is 12 months at -20°C/-80°C.