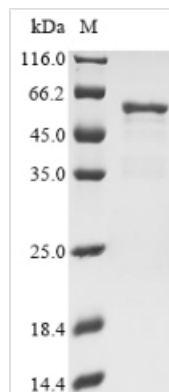




Recombinant Human Nucleosome assembly protein 1-like 4 (NAP1L4)

Product Code	CSB-EP015444HU
Abbreviation	Recombinant Human NAP1L4 protein
Storage	The shelf life is related to many factors, storage state, buffer ingredients, storage temperature and the stability of the protein itself. Generally, the shelf life of liquid form is 6 months at -20°C/-80°C. The shelf life of lyophilized form is 12 months at -20°C/-80°C.
Uniprot No.	Q99733
Form	Liquid or Lyophilized powder
Storage Buffer	If the delivery form is liquid, the default storage buffer is Tris/PBS-based buffer, 5%-50% glycerol. If the delivery form is lyophilized powder, the buffer before lyophilization is Tris/PBS-based buffer, 6% Trehalose.
Product Type	Recombinant Protein
Immunogen Species	Homo sapiens (Human)
Purity	Greater than 90% as determined by SDS-PAGE.
Sequence	ADHSFSDGVPSDSVEAAKNASNTEKLTQVMQNPRLAALQERLDNVPHTPS SYIETLPKAVKRRINALKQLQVRCAHIEAKFYEEVHDLERKYAALYQPLFDKRR EFITGDVEPTDAESEWHSNEEEEEKLAGDMKSKVVVTEKAAATAEPPDPKGIP EFWFTIFRNVDMLSELVQEYDEPILKHLQDIKVKFSDPGQPMSFVLEFHFEPND YFTNSVLTKTYKMKSEPDKADPFSFEGPEIVDCDGCTIDWKKGKNVTVKTIKKK QKHKGRTVTRITKQVPNESFFNFFNPLKASGDGESLDEDESEFTLASDFEIGH FFRERIVPRAVLYFTGEAIEDDDNFEEGEEGEEEELEGDEEGEDEDDAEINPKV
Research Area	Epigenetics and Nuclear Signaling
Source	E.coli
Target Names	NAP1L4
Expression Region	2-375aa
Notes	Repeated freezing and thawing is not recommended. Store working aliquots at 4°C for up to one week.
Tag Info	N-terminal 10xHis-tagged and C-terminal Myc-tagged
Mol. Weight	50.1 kDa
Protein Length	Full Length of Mature Protein
Image	



(Tris-Glycine gel) Discontinuous SDS-PAGE (reduced) with 5% enrichment gel and 15% separation gel.

Description

In the process of expressing the recombinant Human NAP1L4 protein, e.coli cells are transfected with a DNA expression vector that carries the gene encoding the desired protein (2-375aa). The cells are then cultured to induce the expression of the intended protein. The protein features a N-terminal 10xHis tag and C-terminal Myc tag fusion. The recombinant Human NAP1L4 protein is collected and purified from the cell lysate through affinity purification, with its purity surpassing 90%, as assessed by SDS-PAGE.

Reconstitution

We recommend that this vial be briefly centrifuged prior to opening to bring the contents to the bottom. Please reconstitute protein in deionized sterile water to a concentration of 0.1-1.0 mg/mL. We recommend to add 5-50% of glycerol (final concentration) and aliquot for long-term storage at -20°C/-80°C. Our default final concentration of glycerol is 50%. Customers could use it as reference.

Shelf Life

The shelf life is related to many factors, storage state, buffer ingredients, storage temperature and the stability of the protein itself. Generally, the shelf life of liquid form is 6 months at -20°C/-80°C. The shelf life of lyophilized form is 12 months at -20°C/-80°C.