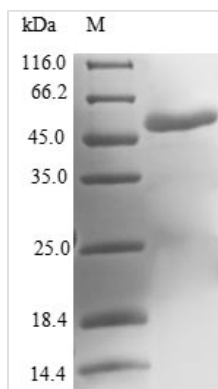




Recombinant Human Molybdopterin synthase catalytic subunit (MOCS2)

Product Code	CSB-EP014706HU
Relevance	Catalytic subunit of the molybdopterin synthase complex, a complex that catalyzes the conversion of precursor Z into molybdopterin. Acts by mediating the incorporation of 2 sulfur atoms from thiocarboxylated MOCS2A into precursor Z to generate a dithiolene group.
Abbreviation	Recombinant Human MOCS2 protein
Storage	The shelf life is related to many factors, storage state, buffer ingredients, storage temperature and the stability of the protein itself. Generally, the shelf life of liquid form is 6 months at -20°C/-80°C. The shelf life of lyophilized form is 12 months at -20°C/-80°C.
Uniprot No.	O96007
Alias	MOCO1-B Molybdenum cofactor synthesis protein 2 large subunit Molybdenum cofactor synthesis protein 2B
Product Type	Recombinant Protein
Immunogen Species	Homo sapiens (Human)
Purity	Greater than 90% as determined by SDS-PAGE.
Sequence	MSSLEISSSCFSLETKLPLSPPLVEDSAFEPSPSRKMDDEVEEKSKDVINFTA EKL SVDEVSQLVISPLCGAISLFVGTTTRNNFEGKKVISLEYEAYLPMAENEVRKICSD IRQKWPVKHIAVFHRLGLVPVSEASIIIVSSAHRAASLEAVSYAIDTLKAKVPIW KKEIYEESSTWKGNGKECFWASNS
Research Area	Signal Transduction
Source	E.coli
Target Names	MOCS2
Protein Names	Recommended name: Molybdopterin synthase catalytic subunit EC= 2.8.1.12 Alternative name(s): MOCO1-B Molybdenum cofactor synthesis protein 2 large subunit Molybdenum cofactor synthesis protein 2B Short name= MOCS2B Molybd
Expression Region	1-188aa
Notes	Repeated freezing and thawing is not recommended. Store working aliquots at 4°C for up to one week.
Tag Info	N-terminal GST-tagged
Mol. Weight	47.9kDa
Protein Length	Full Length
Image	



(Tris-Glycine gel) Discontinuous SDS-PAGE (reduced) with 5% enrichment gel and 15% separation gel.

Reconstitution

We recommend that this vial be briefly centrifuged prior to opening to bring the contents to the bottom. Please reconstitute protein in deionized sterile water to a concentration of 0.1-1.0 mg/mL. We recommend to add 5-50% of glycerol (final concentration) and aliquot for long-term storage at -20°C/-80°C. Our default final concentration of glycerol is 50%. Customers could use it as reference.

Shelf Life

The shelf life is related to many factors, storage state, buffer ingredients, storage temperature and the stability of the protein itself. Generally, the shelf life of liquid form is 6 months at -20°C/-80°C. The shelf life of lyophilized form is 12 months at -20°C/-80°C.