

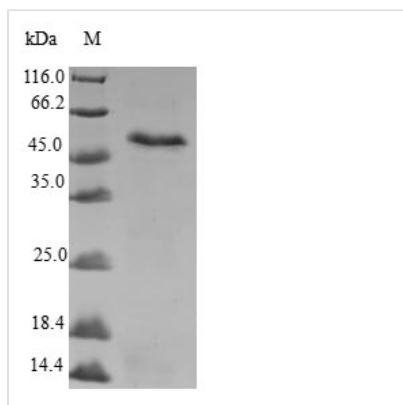


# Recombinant Human Myeloid leukemia factor 1 (MLF1)

<b>Product Code</b>	CSB-EP014621HU
<b>Relevance</b>	Involved in lineage commitment of primary hemopoietic progenitors by restricting erythroid formation and enhancing myeloid formation. Interferes with erythropoietin-induced erythroid terminal differentiation by preventing cells from exiting the cell cycle through suppression of CDKN1B/p27Kip1 levels. Suppresses RFW2/COP1 activity via CSN3 which activates p53 and induces cell cycle arrest. Binds DNA and affects the expression of a number of genes so may function as a transcription factor in the nucleus.
<b>Abbreviation</b>	Recombinant Human MLF1 protein
<b>Storage</b>	The shelf life is related to many factors, storage state, buffer ingredients, storage temperature and the stability of the protein itself. Generally, the shelf life of liquid form is 6 months at -20°C/-80°C. The shelf life of lyophilized form is 12 months at -20°C/-80°C.
<b>Uniprot No.</b>	P58340
<b>Alias</b>	Myelodysplasia-myeloid leukemia factor 1
<b>Product Type</b>	Recombinant Protein
<b>Immunogen Species</b>	Homo sapiens (Human)
<b>Purity</b>	Greater than 90% as determined by SDS-PAGE.
<b>Sequence</b>	MFRMLNSSFEDDPFFSESILAHRENMRQMIRSFSEPFGRDLLSISDGRGRAHN RRGHNDGEDSLTHTDVSSFQTMDQMVSNMRNYMQKLERNFGQLSVDPNGH SFCSSSVMTYSKIGDEPPKVFQASTQTRRAPGGIKETRKAMRDSDSGLEKMAI GHHIHDRAHVIKKSKNKKTGDEEVNQEFINMNESDAHAFDEEWQSEVLKYKP GRHNLGNTRMRSVGHENPGSRELKRREKPQQSPAIEHGRRSNVLGDKLHIKG SSVKSNNK
<b>Research Area</b>	others
<b>Source</b>	E.coli
<b>Target Names</b>	MLF1
<b>Protein Names</b>	Recommended name: Myeloid leukemia factor 1 Alternative name(s): Myelodysplasia-myeloid leukemia factor 1
<b>Expression Region</b>	1-268aa
<b>Notes</b>	Repeated freezing and thawing is not recommended. Store working aliquots at 4°C for up to one week.
<b>Tag Info</b>	N-terminal GST-tagged
<b>Mol. Weight</b>	57.6kDa
<b>Protein Length</b>	Full Length



## Image



(Tris-Glycine gel) Discontinuous SDS-PAGE (reduced) with 5% enrichment gel and 15% separation gel.

## Reconstitution

We recommend that this vial be briefly centrifuged prior to opening to bring the contents to the bottom. Please reconstitute protein in deionized sterile water to a concentration of 0.1-1.0 mg/mL. We recommend to add 5-50% of glycerol (final concentration) and aliquot for long-term storage at -20°C/-80°C. Our default final concentration of glycerol is 50%. Customers could use it as reference.

## Shelf Life

The shelf life is related to many factors, storage state, buffer ingredients, storage temperature and the stability of the protein itself. Generally, the shelf life of liquid form is 6 months at -20°C/-80°C. The shelf life of lyophilized form is 12 months at -20°C/-80°C.