

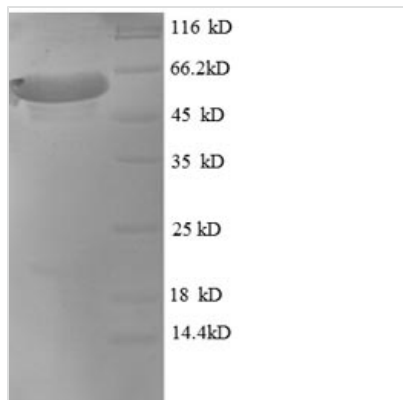


Recombinant Macaca mulatta Microtubule-associated protein tau (MAPT)

Product Code	CSB-EP013481MOW
Relevance	Promotes microtubule assembly and stability, and might be involved in the establishment and maintenance of neuronal polarity. The C-terminus binds axonal microtubules while the N-terminus binds neural plasma membrane components, suggesting that tau functions as a linker protein between both. Axonal polarity is predetermined by tau localization (in the neuronal cell) in the domain of the cell body defined by the centrosome. The short isoforms allow plasticity of the cytoskeleton whereas the longer isoforms may preferentially play a role in its stabilization.
Abbreviation	Recombinant Rhesus macaque MAPT protein
Storage	The shelf life is related to many factors, storage state, buffer ingredients, storage temperature and the stability of the protein itself. Generally, the shelf life of liquid form is 6 months at -20°C/-80°C. The shelf life of lyophilized form is 12 months at -20°C/-80°C.
Uniprot No.	P57786
Alias	Neurofibrillary tangle protein; Paired helical filament-tau ; PHF-tau
Product Type	Recombinant Protein
Immunogen Species	Macaca mulatta (Rhesus macaque)
Purity	Greater than 90% as determined by SDS-PAGE.
Sequence	AEPRQEFDVMEDHAGTYGLGDRKDQEGYTMLQDQEGDTDAGLKESPLQTPA EDGSEELGSETSDAKSTPTAEDVTAPLVDERAPGEQAAAQPHMEIPEGTTAAE AGIGDTPSLEDEAAGHVTQARMVSKSKDGTGSDDKKAKGADGKTKIATPRGA APPGQKGGANATRIPAKTPPAPKTPPSSATKQVQRKPPPAEPTSERGEPPKS GDRSGYSSPGSPGTPGSRSRTPSLPTPPAREPKKVAVVRTPPKSPSSAKSRL QTAPVPMPLKKNVSKIGSTENLKHQPGGGKVQIINKKLDLSNVQSKCGSKDN IKHVPGGGQSVQIVYKVDLSKVTSKCGSLGNIHHKPGGGQVEVKSEKLDKDR VQSKIGSLDNITHVPGGGNKKIETHKLTFRENAKAKTDHGAEIVYKSPVVS GDT SPRHLSNVSSSTGSIDMVDSPQLATLADEVSA SLAKQGL
Research Area	Others
Source	E.coli
Target Names	MAPT
Expression Region	2-459aa
Notes	Repeated freezing and thawing is not recommended. Store working aliquots at 4°C for up to one week.
Tag Info	N-terminal 6xHis-SUMO-tagged
Mol. Weight	63.8kDa


Protein Length

Full Length of Mature Protein

Image


(Tris-Glycine gel) Discontinuous SDS-PAGE (reduced) with 5% enrichment gel and 15% separation gel.

Reconstitution

We recommend that this vial be briefly centrifuged prior to opening to bring the contents to the bottom. Please reconstitute protein in deionized sterile water to a concentration of 0.1-1.0 mg/mL. We recommend to add 5-50% of glycerol (final concentration) and aliquot for long-term storage at -20°C/-80°C. Our default final concentration of glycerol is 50%. Customers could use it as reference.

Shelf Life

The shelf life is related to many factors, storage state, buffer ingredients, storage temperature and the stability of the protein itself. Generally, the shelf life of liquid form is 6 months at -20°C/-80°C. The shelf life of lyophilized form is 12 months at -20°C/-80°C.