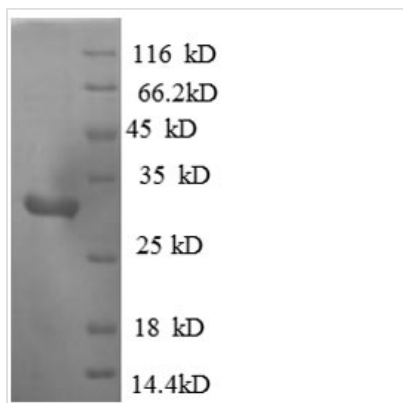




Recombinant Mouse Mitogen-activated protein kinase kinase kinase 1 (Map3k1), partial

Product Code	CSB-EP013417MO
Relevance	Component of a protein kinase signal transduction cascade. Activates the ERK and JNK kinase pathways by phosphorylation of MAP2K1 and MAP2K4. Activates CHUK and IKBKB, the central protein kinases of the NF-kappa-B pathway.
Abbreviation	Recombinant Mouse Map3k1 protein, partial
Storage	The shelf life is related to many factors, storage state, buffer ingredients, storage temperature and the stability of the protein itself. Generally, the shelf life of liquid form is 6 months at -20°C/-80°C. The shelf life of lyophilized form is 12 months at -20°C/-80°C.
Uniprot No.	P53349
Alias	MAPK/ERK kinase kinase 1 ;MEK kinase 1 ;MEKK 1
Product Type	Recombinant Protein
Immunogen Species	Homo sapiens (Human)
Purity	Greater than 90% as determined by SDS-PAGE.
Sequence	QPYREDAEWLKGQQIGLGAFSSCYQAQDVG TGTLMAVKQVTYVRNTSSEQE EVVEALREEIRMMGHLNHPNIIRMLGATCEKSNYNLFIEWMAGGSVAHLLSKY GAFKESVVINYTEQLLRGLSYLHENQIIHRDVKGANLLIDSTGQRLRIADFGAAA RLASKGTGAGEFQGQLLGTIAFMAPEVLRGQQYGRSCDVWSVGCAIEMACA KPPWNAEKHSNHLALIFKIASATTAPSIPSHLSPGLRDVAVRCLELQPQDRPPS RELLKHPVFRTTW
Research Area	Others
Source	E.coli
Target Names	MAP3K1
Expression Region	1216-1493aa
Notes	Repeated freezing and thawing is not recommended. Store working aliquots at 4°C for up to one week.
Tag Info	N-terminal 6xHis-tagged
Mol. Weight	34.8kDa
Protein Length	Partial
Image	



(Tris-Glycine gel) Discontinuous SDS-PAGE (reduced) with 5% enrichment gel and 15% separation gel.

Reconstitution

We recommend that this vial be briefly centrifuged prior to opening to bring the contents to the bottom. Please reconstitute protein in deionized sterile water to a concentration of 0.1-1.0 mg/mL. We recommend to add 5-50% of glycerol (final concentration) and aliquot for long-term storage at -20°C/-80°C. Our default final concentration of glycerol is 50%. Customers could use it as reference.

Shelf Life

The shelf life is related to many factors, storage state, buffer ingredients, storage temperature and the stability of the protein itself. Generally, the shelf life of liquid form is 6 months at -20°C/-80°C. The shelf life of lyophilized form is 12 months at -20°C/-80°C.