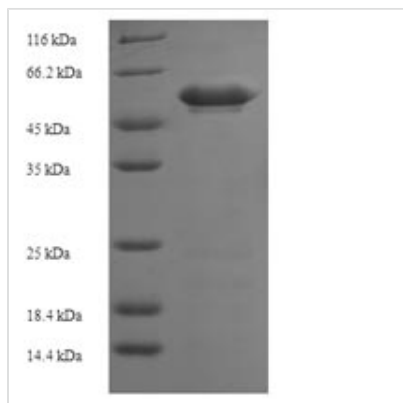




Recombinant Human Dual specificity mitogen-activated protein kinase kinase 3 (MAP2K3)

Product Code	CSB-EP013412HU
Relevance	Dual specificity kinase. Is activated by cytokines and environmental stress in vivo. Catalyzes the concomitant phosphorylation of a threonine and a tyrosine residue in the MAP kinase p38.
Abbreviation	Recombinant Human MAP2K3 protein
Storage	The shelf life is related to many factors, storage state, buffer ingredients, storage temperature and the stability of the protein itself. Generally, the shelf life of liquid form is 6 months at -20°C/-80°C. The shelf life of lyophilized form is 12 months at -20°C/-80°C.
Uniprot No.	P46734
Alias	MAPK/ERK kinase 3 ;MEK 3Stress-activated protein kinase kinase 2 ;SAPK kinase 2 ;SAPKK-2 ;SAPKK2
Product Type	Recombinant Protein
Immunogen Species	Homo sapiens (Human)
Purity	Greater than 90% as determined by SDS-PAGE.
Sequence	MESPASSQPASMPQSKGKSKRKKDLRISCMSKPPAPNPTPPRNLDsRTFITIG DRNFEVEADDLVTISELGRGAYGVVEKVRHAQSGTIMAVKRIRATVNSQEQKR LLMDLDINMRTVDCFYTVTFYGALFREGDVWICMELMDTSLDKFYRKVLDKNM TIPEDILGEIAVSIVRALEHLHSLSVIHRDVKPSNVLINKEGHVKMCDFGISGYL VDSVAKTMDAGCKPYMAPERINPELNQKGYNVKSDVWSLGITMIEMAILRFPY ESWGTPFQQLKQVVEEPSQLPADRFSPFVDFTAQCLRKNPAERMSYLELM EHPFFTLHKTKKTDIAAFVKEILGEDS
Research Area	Cancer
Source	E.coli
Target Names	MAP2K3
Expression Region	1-347aa
Notes	Repeated freezing and thawing is not recommended. Store working aliquots at 4°C for up to one week.
Tag Info	N-terminal 6xHis-SUMO-tagged
Mol. Weight	55.3kDa
Protein Length	Full Length
Image	



(Tris-Glycine gel) Discontinuous SDS-PAGE (reduced) with 5% enrichment gel and 15% separation gel.

Reconstitution

We recommend that this vial be briefly centrifuged prior to opening to bring the contents to the bottom. Please reconstitute protein in deionized sterile water to a concentration of 0.1-1.0 mg/mL. We recommend to add 5-50% of glycerol (final concentration) and aliquot for long-term storage at -20°C/-80°C. Our default final concentration of glycerol is 50%. Customers could use it as reference.

Shelf Life

The shelf life is related to many factors, storage state, buffer ingredients, storage temperature and the stability of the protein itself. Generally, the shelf life of liquid form is 6 months at -20°C/-80°C. The shelf life of lyophilized form is 12 months at -20°C/-80°C.