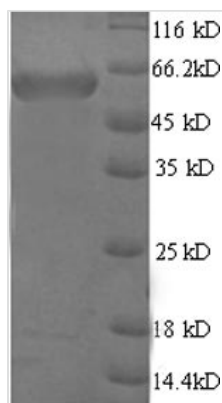




Recombinant Mouse Microtubule-associated protein 2 (Map2), partial

Product Code	CSB-EP013408MO
Relevance	The exact function of MAP2 is unknown but MAPs may stabilize the microtubules against depolymerization. They also se to have a stiffening effect on microtubules.
Abbreviation	Recombinant Mouse Map2 protein, partial
Storage	The shelf life is related to many factors, storage state, buffer ingredients, storage temperature and the stability of the protein itself. Generally, the shelf life of liquid form is 6 months at -20°C/-80°C. The shelf life of lyophilized form is 12 months at -20°C/-80°C.
Uniprot No.	P20357
Product Type	Recombinant Protein
Immunogen Species	Mus musculus (Mouse)
Purity	Greater than 90% as determined by SDS-PAGE.
Sequence	GMEGEKLPPVPFAQTFGTNLED RKQSTEPSIVMPSIGLSAEPPAPKEPKDWF EMPTESKKDEWGLAAPISPGPLTPMREKDVLEDIPRWEGKQFDSPMPSPFHG GSFTLPLDTMKNERVSEGPRPFAPVFFQSDDKVSLQDPSALATSKESSKDEEP LKDKADKVADV SISEVTLLGNVHSPVVEGYVGENISGEVKVTTDQEKKETSAP SVQEPTLTETEPQTKLDEKSTVSIEEAVAKKEESFKLRDDKTGVIQTSTEQSFS KEDQKGQEHTIDELKQDSFPISLEQAVTDAAMTSKTLGKVTSEPEAVSERREIQ GLFEEKTADKNKLEGAGSATIAEVEMP
Research Area	Others
Source	E.coli
Target Names	Map2
Expression Region	213-559aa
Notes	Repeated freezing and thawing is not recommended. Store working aliquots at 4°C for up to one week.
Tag Info	N-terminal 6xHis-SUMO-tagged
Mol. Weight	54.0kDa
Protein Length	Partial
Image	



(Tris-Glycine gel) Discontinuous SDS-PAGE (reduced) with 5% enrichment gel and 15% separation gel.

Reconstitution

We recommend that this vial be briefly centrifuged prior to opening to bring the contents to the bottom. Please reconstitute protein in deionized sterile water to a concentration of 0.1-1.0 mg/mL. We recommend to add 5-50% of glycerol (final concentration) and aliquot for long-term storage at -20°C/-80°C. Our default final concentration of glycerol is 50%. Customers could use it as reference.

Shelf Life

The shelf life is related to many factors, storage state, buffer ingredients, storage temperature and the stability of the protein itself. Generally, the shelf life of liquid form is 6 months at -20°C/-80°C. The shelf life of lyophilized form is 12 months at -20°C/-80°C.