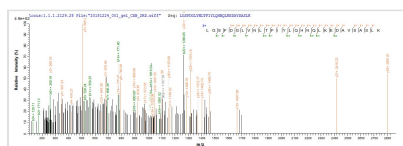




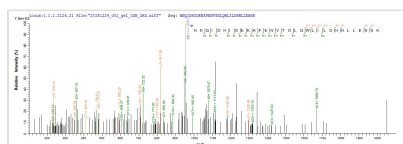
Recombinant Mouse Lumican (Lum)

Product Code	CSB-EP013234MO
Abbreviation	Recombinant Mouse Lum protein
Storage	The shelf life is related to many factors, storage state, buffer ingredients, storage temperature and the stability of the protein itself. Generally, the shelf life of liquid form is 6 months at -20°C/-80°C. The shelf life of lyophilized form is 12 months at -20°C/-80°C.
Uniprot No.	P51885
Storage Buffer	Tris-based buffer,50% glycerol
Product Type	Recombinant Protein
Immunogen Species	Mus musculus (Mouse)
Purity	Greater than 85% as determined by SDS-PAGE.
Sequence	QYYDYDIPLFMYGQISPNCAPCNCPSYPTAMYCDDLKLKSVPMVPPGIKYL YLRNNQIDHIDEKAFENVTDLQWLILDHNLLENSKIKGKVFSKLKQLKHLHINYN NLTESVGPLPKSLQDLQLTNNKISKLSFDGLVNLTFIYLQHNQLKEDAVSASL KGLKSLEYLDLSFNQMSKLPAGLPTSLLTLYLDNNKISNIPDEYFKRFTGLQYLR LSHNELADSGVPGNSFNISLLELDLSYNKLKSIPTVNENLENYYLEVNELEKFD VKSFCKILGPLSYSKIKHLRLDGNPLTQSSLPPDMYECLRVANEITVN
Research Area	Cancer
Source	E.coli
Target Names	Lum
Protein Names	Recommended name: Lumican Alternative name(s): Keratan sulfate proteoglycan lumican Short name= KSPG lumican
Expression Region	19-338aa
Notes	Repeated freezing and thawing is not recommended. Store working aliquots at 4°C for up to one week.
Tag Info	N-terminal 10xHis-tagged and C-terminal Myc-tagged
Mol. Weight	44.0 kDa
Protein Length	Full Length of Mature Protein

Image



Based on the SEQUEST from database of E.coli host and target protein, the LC-MS/MS Analysis result of CSB-EP013234MO could indicate that this peptide derived from E.coli-expressed Mus musculus (Mouse) Lum.



Based on the SEQUEST from database of E.coli host and target protein, the LC-MS/MS Analysis result of CSB-EP013234MO could indicate that this peptide derived from E.coli-expressed Mus



musculus (Mouse) Lum.

Description

The synthesis of the recombinant plasmid containing the gene encoding the Mouse Lum protein (19-338aa) is the first step to produce the recombinant Mouse Lum protein. After that, the recombinant plasmid is transformed into e.coli cells. e.coli cells capable of enduring a specific antibiotic are selected, demonstrating successful uptake of the recombinant plasmid. The e.coli cells containing the recombinant plasmid are cultured under conditions that encourage the expression of the gene of interest. A N-terminal 10xHis tag and C-terminal Myc tag is linked to the protein. Following expression, affinity purification is employed to isolate and purify the recombinant Mouse Lum protein from the cell lysate. Denaturing SDS-PAGE is applied to resolve the resulting recombinant Mouse Lum protein, indicating a purity level exceeding 85%.

Reconstitution

We recommend that this vial be briefly centrifuged prior to opening to bring the contents to the bottom. Please reconstitute protein in deionized sterile water to a concentration of 0.1-1.0 mg/mL. We recommend to add 5-50% of glycerol (final concentration) and aliquot for long-term storage at -20°C/-80°C. Our default final concentration of glycerol is 50%. Customers could use it as reference.

Shelf Life

The shelf life is related to many factors, storage state, buffer ingredients, storage temperature and the stability of the protein itself. Generally, the shelf life of liquid form is 6 months at -20°C/-80°C. The shelf life of lyophilized form is 12 months at -20°C/-80°C.