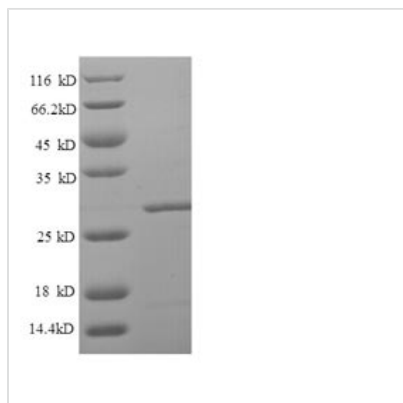




Recombinant Human Lipopolysaccharide-responsive and beige-like anchor protein (LRBA), partial

Product Code	CSB-EP013070HU(C)
Relevance	May be involved in coupling signal transduction and vesicle trafficking to enable polarized secretion and/or mbrane deposition of immune effector molecules.
Abbreviation	Recombinant Human LRBA protein, partial
Storage	The shelf life is related to many factors, storage state, buffer ingredients, storage temperature and the stability of the protein itself. Generally, the shelf life of liquid form is 6 months at -20°C/-80°C. The shelf life of lyophilized form is 12 months at -20°C/-80°C.
Uniprot No.	P50851
Alias	Beige-like protein;CDC4-like protein
Product Type	Recombinant Protein
Immunogen Species	Homo sapiens (Human)
Purity	Greater than 90% as determined by SDS-PAGE.
Sequence	PQPHRHVLEISRQHEQPGQGIAPDAVNGQRRDSRSTVFRIPEFNWSQMHQRL LTDLLFSIETDIQMWRSHSTKTVMDFVNSSDNVIFVHNTIHLISQVMDNMVMAC GGILPLLSAATSATHELENIEPTQGLSIEASVTFLQRLISLVDVLIFASSLGFTIE AEKSMSSGGILRQCLRLVCAVAVRNCLECCQHSQQLKTRGDKALKPMHSLIPLG KSAAKSPVDIVTGGISPV
Research Area	Signal Transduction
Source	E.coli
Target Names	LRBA
Expression Region	1267-1500aa
Notes	Repeated freezing and thawing is not recommended. Store working aliquots at 4°C for up to one week.
Tag Info	N-terminal 6xHis-tagged
Mol. Weight	29.8kDa
Protein Length	Partial
Image	



(Tris-Glycine gel) Discontinuous SDS-PAGE (reduced) with 5% enrichment gel and 15% separation gel.

Reconstitution

We recommend that this vial be briefly centrifuged prior to opening to bring the contents to the bottom. Please reconstitute protein in deionized sterile water to a concentration of 0.1-1.0 mg/mL. We recommend to add 5-50% of glycerol (final concentration) and aliquot for long-term storage at -20°C/-80°C. Our default final concentration of glycerol is 50%. Customers could use it as reference.

Shelf Life

The shelf life is related to many factors, storage state, buffer ingredients, storage temperature and the stability of the protein itself. Generally, the shelf life of liquid form is 6 months at -20°C/-80°C. The shelf life of lyophilized form is 12 months at -20°C/-80°C.