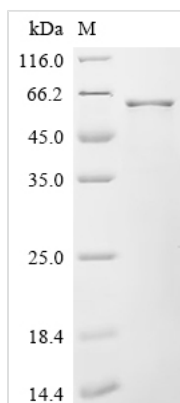




Recombinant Human Protein ERGIC-53 (LMAN1), partial

Product Code	CSB-EP012991HU1
Abbreviation	Recombinant Human LMAN1 protein, partial
Storage	The shelf life is related to many factors, storage state, buffer ingredients, storage temperature and the stability of the protein itself. Generally, the shelf life of liquid form is 6 months at -20°C/-80°C. The shelf life of lyophilized form is 12 months at -20°C/-80°C.
Uniprot No.	P49257
Form	Liquid or Lyophilized powder
Storage Buffer	If the delivery form is liquid, the default storage buffer is Tris/PBS-based buffer, 5%-50% glycerol. If the delivery form is lyophilized powder, the buffer before lyophilization is Tris/PBS-based buffer, 6% Trehalose.
Product Type	Recombinant Human Protein ERGIC-53 (LMAN1), partial
Immunogen Species	Homo sapiens (Human)
Sensitivity	Not Test
Purity	Greater than 85% as determined by SDS-PAGE.
Sequence	DGVGGDPAVALPHRRFEYKYSFKGPHLVQSDGTVPFWAHAGNAIPSSDQIRV APSLKSQRGSVWTKTKAAFENWEVEVTFRTGRGRIGADGLAIWYAENQGLE GPVFGSADLWNGVGIFDSDNDGKKNNPAIVIIGNNGQIHVDHQNDSQAL ASCQRDFRNKPYPVRAKITYYQNTLTVMINNGFTPDKNDEYFCAKVENMIIPAQ GHFGISAATGGLADDHVDLSFLTFQLTEPGKEPPTPDKEISEKEKEYQEEFEH FQQELDKKKEEFQKGHPDLQGQPAEEIFESVGDRELQVFEQGNRIHLEIKQL NRQLDMILDEQRRYVSSLTEEISKRGAGMPGQHGQITQQELDTVVKTQHEILR QVNEMKNSMSETVRLVSGMQHPGSAGGVYETTQHFIDIKEHLHIVKRDIDNLV QRNMPSNEKPKCELPFPSPCLS
Research Area	Signal Transduction
Source	E.coli
Target Names	LMAN1
Expression Region	31-477aa
Notes	Repeated freezing and thawing is not recommended. Store working aliquots at 4°C for up to one week.
Tag Info	C-terminal 6xHis-tagged
Mol. Weight	57.3 kDa
Protein Length	Partial
Image	



(Tris-Glycine gel) Discontinuous SDS-PAGE (reduced) with 5% enrichment gel and 15% separation gel.

Reconstitution

We recommend that this vial be briefly centrifuged prior to opening to bring the contents to the bottom. Please reconstitute protein in deionized sterile water to a concentration of 0.1-1.0 mg/mL. We recommend to add 5-50% of glycerol (final concentration) and aliquot for long-term storage at -20°C/-80°C. Our default final concentration of glycerol is 50%. Customers could use it as reference.

Shelf Life

The shelf life is related to many factors, storage state, buffer ingredients, storage temperature and the stability of the protein itself. Generally, the shelf life of liquid form is 6 months at -20°C/-80°C. The shelf life of lyophilized form is 12 months at -20°C/-80°C.