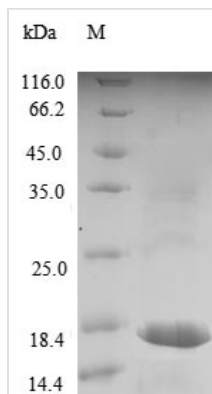




Recombinant Dog Lutropin subunit beta (LHB)

Product Code	CSB-EP012910DO
Relevance	Promotes spermatogenesis and ovulation by stimulating the testes and ovaries to synthesize steroids.
Abbreviation	Recombinant Dog LHB protein
Storage	The shelf life is related to many factors, storage state, buffer ingredients, storage temperature and the stability of the protein itself. Generally, the shelf life of liquid form is 6 months at -20°C/-80°C. The shelf life of lyophilized form is 12 months at -20°C/-80°C.
Uniprot No.	P18842
Alias	Luteinizing hormone subunit beta Short name:LH-B Short name:LSH-B Short name:LSH-beta
Product Type	Recombinant Protein
Immunogen Species	Canis lupus familiaris (Dog) (Canis familiaris)
Purity	Greater than 90% as determined by SDS-PAGE.
Sequence	SRGPLRPLCRPINATLAAENEACPVCTITFTTTICAGYCPSMVRVLPALPPVPQ PVCTYHELHFASIRLPGCPPGVDPMSFPVALSCRCGPCRLSNSDCGGPRAQ SLACDRPLLPGLLFL
Research Area	Others
Source	E.coli
Target Names	LHB
Protein Names	Recommended name: Lutropin subunit beta Alternative name(s): Luteinizing hormone subunit beta Short name= LH-B Short name= LSH-B Short name= LSH-beta Lutropin beta chain
Expression Region	18-138aa
Notes	Repeated freezing and thawing is not recommended. Store working aliquots at 4°C for up to one week.
Tag Info	N-terminal 6xHis-tagged
Mol. Weight	16.8kDa
Protein Length	Full Length of Mature Protein
Image	



(Tris-Glycine gel) Discontinuous SDS-PAGE (reduced) with 5% enrichment gel and 15% separation gel.

Description

The DNA fragment encoding the 18-138aa of the Canis familiaris LHB protein was fused with N-terminal 6xHis tag gene and then was inserted into the expression vector, which was subsequently transformed into the E.coli for expression. The resulting product was further purified to obtain the recombinant Canis familiaris LHB protein. The purity of this recombinant LHB protein is greater than 90% assessed by BandsScan software analysis combined with SDS-PAGE. This recombinant LHB protein showed a band on the gel with a molecular weight of approximately 16 kDa.

LHB belongs to glycoprotein hormones subunit beta family. The protein encoded by LHB gene is called the beta subunit of luteinizing hormone (LH). Glycoprotein hormones are heterodimers consisting of two subunits, an identical alpha-subunit and a unique beta-subunit. Among of them, beta-subunit confers biological specificity. It is usually involved in GPCR pathway and hormone ligand-binding receptors. Generally, abnormal luteinizing hormone (LH) secretion and action are known to affect ovarian steroidogenesis and thus playing a crucial role in manifestation of polycystic ovary syndrome (PCOS).

Reconstitution

We recommend that this vial be briefly centrifuged prior to opening to bring the contents to the bottom. Please reconstitute protein in deionized sterile water to a concentration of 0.1-1.0 mg/mL. We recommend to add 5-50% of glycerol (final concentration) and aliquot for long-term storage at -20°C/-80°C. Our default final concentration of glycerol is 50%. Customers could use it as reference.

Shelf Life

The shelf life is related to many factors, storage state, buffer ingredients, storage temperature and the stability of the protein itself. Generally, the shelf life of liquid form is 6 months at -20°C/-80°C. The shelf life of lyophilized form is 12 months at -20°C/-80°C.