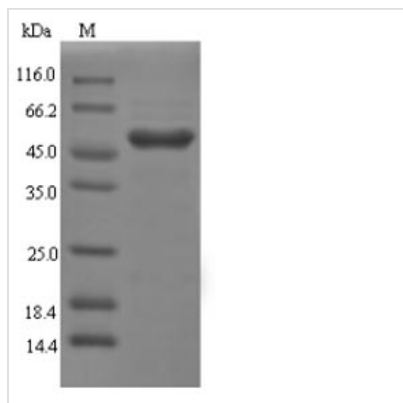


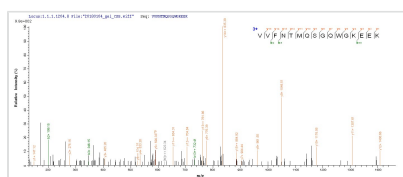


# Recombinant Rat Galectin-4 (Lgals4)

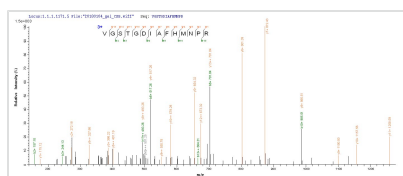
<b>Product Code</b>	CSB-EP012889RA
<b>Relevance</b>	Galectin that binds lactose and a related range of sugars.
<b>Abbreviation</b>	Recombinant Rat Lgals4 protein
<b>Storage</b>	The shelf life is related to many factors, storage state, buffer ingredients, storage temperature and the stability of the protein itself. Generally, the shelf life of liquid form is 6 months at -20°C/-80°C. The shelf life of lyophilized form is 12 months at -20°C/-80°C.
<b>Uniprot No.</b>	P38552
<b>Alias</b>	L-36 lactose-binding protein Short name: L36LBP Lactose-binding lectin 4
<b>Product Type</b>	Recombinant Protein
<b>Immunogen Species</b>	Rattus norvegicus (Rat)
<b>Purity</b>	Greater than 90% as determined by SDS-PAGE.
<b>Sequence</b>	MAYVPAPGYQPTYNPTLPYKRPIPGGLSVGMSIYIQGIAKDNMRRFHVNFVAVG QDEGADIAFHFNPRFDGWDKVVFNMTMQSGQWGKEEKKKSMPFQKGHHFELV FMVMSEHYKVVVNGTPFYEYGHRLPLQMVTHLQVDGDLELQSINFLGGQPAA SQYPGTMTIPAYPSAGYNPPQMNSLPVMAGPPIFNPPVPYVGTLLQGGLTARR TIIKGYVLPTAKNLIINFKVGSTGDIAFHMNPRIGDCVVRNSYMNCSWGSEERK IPYNPFGAGQFFDLSIRCGTDRFKVFANGQHFLDFSHRFQAFQQRVDMLEIKGDI TLSYVQI
<b>Research Area</b>	Others
<b>Source</b>	E.coli
<b>Target Names</b>	Lgals4
<b>Expression Region</b>	1-324aa
<b>Notes</b>	Repeated freezing and thawing is not recommended. Store working aliquots at 4°C for up to one week.
<b>Tag Info</b>	N-terminal 6xHis-SUMO-tagged
<b>Mol. Weight</b>	52.3kDa
<b>Protein Length</b>	Full Length
<b>Image</b>	



(Tris-Glycine gel) Discontinuous SDS-PAGE (reduced) with 5% enrichment gel and 15% separation gel.



Based on the SEQUEST from database of E.coli host and target protein, the LC-MS/MS Analysis result of CSB-EP012889RA could indicate that this peptide derived from E.coli-expressed *Rattus norvegicus* (Rat) Lgals4.



Based on the SEQUEST from database of E.coli host and target protein, the LC-MS/MS Analysis result of CSB-EP012889RA could indicate that this peptide derived from E.coli-expressed *Rattus norvegicus* (Rat) Lgals4.

## Reconstitution

We recommend that this vial be briefly centrifuged prior to opening to bring the contents to the bottom. Please reconstitute protein in deionized sterile water to a concentration of 0.1-1.0 mg/mL. We recommend to add 5-50% of glycerol (final concentration) and aliquot for long-term storage at -20°C/-80°C. Our default final concentration of glycerol is 50%. Customers could use it as reference.

## Shelf Life

The shelf life is related to many factors, storage state, buffer ingredients, storage temperature and the stability of the protein itself. Generally, the shelf life of liquid form is 6 months at -20°C/-80°C. The shelf life of lyophilized form is 12 months at -20°C/-80°C.